



FACT BOOK

2012 – 2013

ADMINISTRATION

Cynthia A. Bioteau, Ph.D.
President

Christopher L. Picard, Ph.D.
Provost

Dennis R. Klaus
Vice President of Business Services

Tim Sheehan
Vice President of Government and Community Relations

Alison McFarlane
Vice President of Institutional Advancement

Deneece Huftalin, Ph.D.
Vice President of Student Services

BOARD OF TRUSTEES

Jesselie B. Anderson, *Chair*

Gail Miller, *Vice Chair*

Clint Ensign

Larry Hancock

Ashok Joshi, Ph.D.

Stanley B. Parrish

Richard R. Tranter

Anna Kay Waddoups

Aaron Starks, *Student Association President*

Annie V. Schwemmer, *SLCC Alumni Association President*

SALT LAKE COMMUNITY COLLEGE 2012-2013 FACT BOOK

INTRODUCTION	1
SLCC Vision, Mission, and Strategic Priorities	2
TAB A. STUDENT ENROLLMENT	
STEP AHEAD – Student Enrollment	3
GRAPH 1 Salt Lake Community College Enrollment Trends	4
TABLE 1 Salt Lake Community College Enrollment Trends	5
TABLE 2A Enrollment Summary - Summer Term	6
TABLE 2 Enrollment by Academic Dept - Summer Term FTE's.....	7
TABLE 3A Enrollment Summary - Fall Semester.....	8
TABLE 3 Enrollment by Academic Dept - Fall Semester FTE's.....	9
TABLE 4A Enrollment Summary - Spring Semester	10
TABLE 4 Enrollment by Academic Dept – Spring Semester FTE's	11
TABLE 5 2011-2012 Enrollment by Summer Term - Fall & Spring End of Term (Annualized FTE's)	12
TABLE 6 Enrollment by Academic Dept - Annualized FTE's	13
GRAPH 7 Student Headcount Enrollment per Credit Hour	14
TABLE 7 Student Headcount Enrollment per Credit Hour	15
TABLE 8 Average Credit Hours Taken	16
TABLE 9 Average Class Size – Fall 2008-2009 to 2012-2013	17

TABLE OF CONTENTS
-Continued-

TAB B. STUDENT DEMOGRAPHICS

STEP AHEAD – DEMOGRAPHICS	18
TABLE 10 Student Enrollment by Majors.....	19
TABLE 11 Student Enrollment by Majors and by Gender.....	20
GRAPH 12 Where Students Live by Zip Code.....	21
TABLE 12 Where Students Live by Zip Code.....	22
TABLE 13 Student Distribution by Age and Gender.....	23
TABLE 14 Student Distribution by Racial Background and Gender.....	24
TABLE/ GRAPH 15 Male to Female Ratios.....	25
TABLE/ GRAPH 16 Veterans Currently Eligible to Receive Benefits by Academic Classification.....	26
TABLE 17 Average Age of Students.....	27

TAB C. FACULTY/STAFF INFORMATION

STEP AHEAD – FACULTY/STAFF	28
TABLE 18 2011-2012 Student/Faculty Ratios	29
GRAPH 19 Student/Faculty & Student/Staff Ratios - Salt Lake Community College	30
TABLE 19 Student/Faculty & Student/Staff Ratios - Salt Lake Community College	31
TABLE 20 Salaried Personnel Budgeted FTE by Index Codes, by Gender, and by Faculty/Staff (Ed and General Indexes).....	32

TABLE OF CONTENTS
-Continued-

TAB C. FACULTY/STAFF INFORMATION

TABLE 21 Salaried Personnel Budgeted FTE by Index Codes, by Gender, and by Faculty/Staff (Service Enterprises/Auxiliary, Designated, Restricted, Agency Funds, and Skills Center Funded Indexes).....37

TABLE 22 2012-2013 Faculty Information including Tenure, Ranking, Educational Credentials and Male/Female Ratios39

TAB D. DEGREES AND AWARDS

STEP AHEAD – DEGREES AND AWARDS40

TABLE 23 Distribution of Graduates by Degree and by Major41

TABLE 24 Distribution of Graduates by Degree, by Major and by Gender42

TAB E. FINANCIAL INFORMATION

STEP AHEAD – FINANCIAL INFORMATION43

TABLE 25 Current and Historical Tuition and Fee Schedule for Salt Lake Community College44

TABLE 26 Cost Per Student Credit Hour by Department (Instructional Cost).....45

TABLE 27 Cost Per FTE by Department (Instructional Cost)46

TABLE 28 Costs Per FTE - Current and Adjusted for Inflation47

TABLE 29 Financial Aid Information48

**TABLE/
GRAPH 30** 2011-2012 Revenue Sources & Expenditures (E & G).....49

**TABLE/
GRAPH 31** 2011-2012 Revenue Sources & Expenditures (Total)50

TABLE OF CONTENTS
-Continued-

TAB F. FACILITIES

STEP AHEAD – FACILITIES.....51

TABLE/ Building Profile Instructional Buildings
GRAPH 32 Taylorsville Redwood Campus52

TABLE/ Building Profile
GRAPH 33 All Campus Locations.....53

TAB G. STUDENT INPUT

STEP AHEAD – STUDENT INPUT.....54

Explanation of Student Follow-Up Systems.....55

TABLE 34 New Student Survey - 2011-2012 Summary56

TABLE 35 Non-Returning Survey - 2011-2012 Summary.....58

TABLE 36 Graduating Student Survey - 2011-2012 Summary.....60

TAB H. NON-CREDIT ACTIVITY

STEP AHEAD – NON-CREDIT ACTIVITY.....61

Division of Applied Technology -
Mission and Operating Characteristics62

TABLE 37 Division of Applied Technology Enrollment Trends63

TABLE 38 Division of Applied Technology Student Demographics64

TABLE 39 Division of Applied Technology -
Distribution of Graduates by Program and by Gender.....65

TABLE/ 2011-2012 Division of Applied Technology Revenue Sources
GRAPH 40 & Expenditures (Total).....66

TABLE 41 School of Professional and Economic Development -
Non-Credit Student Enrollment Trends.....67

INTRODUCTION

The purpose of the Fact Book is to provide official information about Salt Lake Community College (SLCC). Where possible, several years of historical data has been presented to provide perspective and to show trends.

It should be noted that given the complexities and size of SLCC and the multiple special databases that are being used, when interpreting data appearing in this book, care should be taken to ensure the database is correct for the purpose for which the data is used. The Fact Book represents the official numbers of Salt Lake Community College.

The organization of the data is as follows:

- Tab A.** Student Enrollment
- Tab B.** Student Demographics
- Tab C.** Faculty/Staff Information
- Tab D.** Degrees and Awards
- Tab E.** Financial Information
- Tab F.** Facilities
- Tab G.** Student Input
- Tab H.** Non-Credit

The Fact Book was prepared by Debbie Summers and Annette Lowe from the Office of Institutional Research.

SALT LAKE COMMUNITY COLLEGE

VISION STATEMENT

Salt Lake Community College will be the premier comprehensive community college in the nation.

MISSION STATEMENT

Salt Lake Community College is a public, open-access, comprehensive community college committed to serving the broader community. Its mission is to provide quality higher education and lifelong learning to people of diverse cultures, abilities, and ages, and to serve the needs of community and government agencies, business, industry and employers.

The College fulfills its mission by:

- offering associate degrees, certificate programs, career and technical education, developmental education, transfer education, and workforce training to prepare individuals for career opportunities and an enriched lifetime of learning and growing;
- offering programs and student support services that provide students opportunities to acquire knowledge and critical thinking skills, develop self-confidence, experience personal growth, and value cultural enrichment;
- maintaining an environment committed to teaching and learning, collegiality, and the respectful and vigorous dialogue that nourishes active participation and service in a healthy democracy.

STRATEGIC PRIORITIES

- Enhance Quality Higher Education
- Improve Student Access and Success
- Advance a Culture of Evidence & Accountability
- Strengthen Institutional Support
- Advance Partnerships/Relationships with the Community and Business

TAB A. STEP AHEAD

STUDENT ENROLLMENT

Salt Lake Community College has seen a slight decrease in both headcount and FTE (One Full-Time Equivalent equals 15 Credit Hours) throughout the 2012-2013 year. SLCC continues to maximize resources to teach and train as many students as possible while maintaining instructional quality.

Fast Facts (Budget Related Figures)

- Fall 12-13 Headcount = 26,161
- Fall 12-13 FTE = 15,361
- Fall 12-13 Average Credit Hours taken = 8.81
- Fall 12-13 Average Class Size = 21.08

GRAPH 1.

SALT LAKE COMMUNITY COLLEGE ENROLLMENT TRENDS

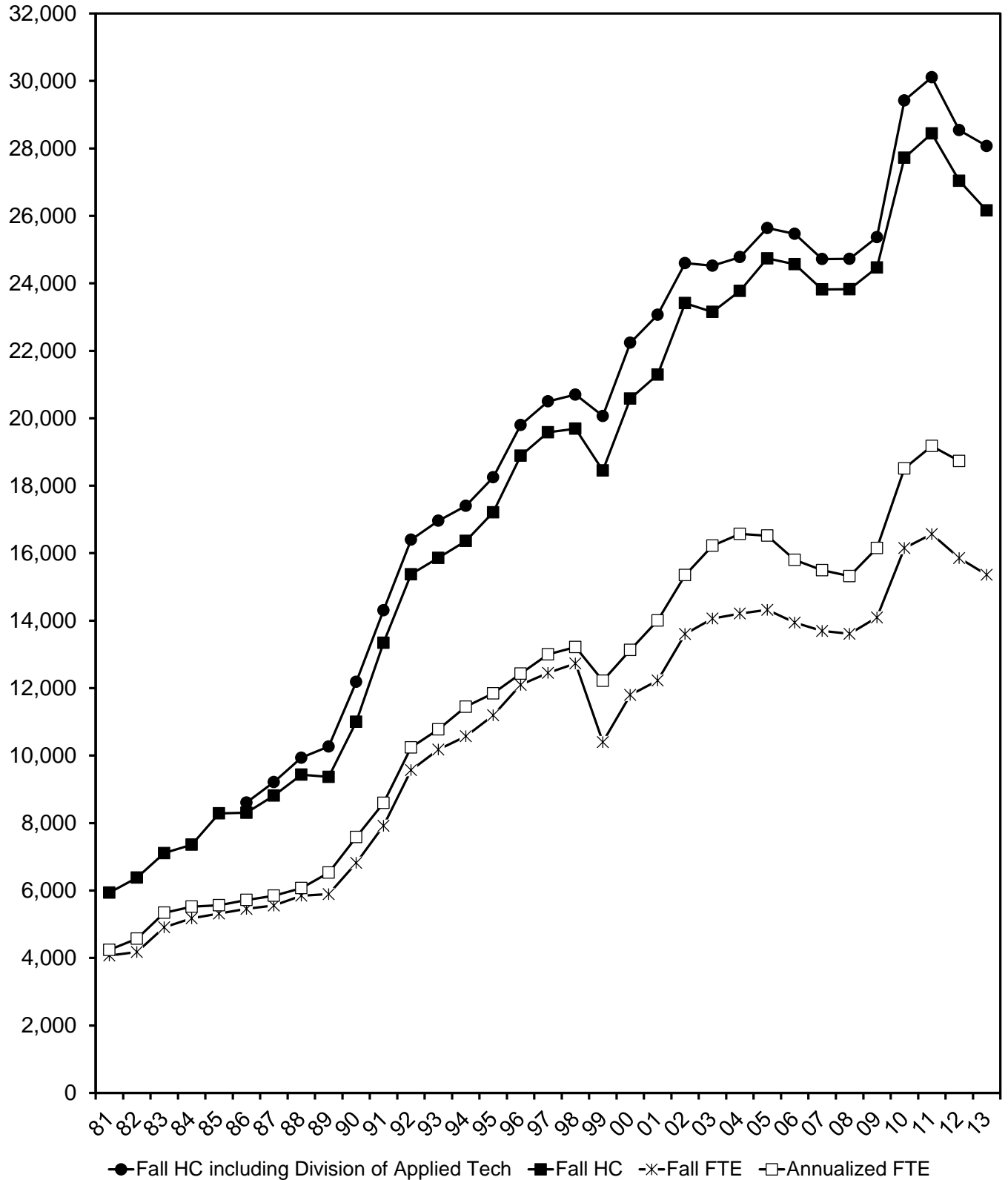


TABLE 1.

**SALT LAKE COMMUNITY COLLEGE
ENROLLMENT TRENDS**

YEARS	FALL HEADCOUNT THIRD WEEK			FALL FTE THIRD WEEK			AFTE'S	ANNUALIZED UNDUPLICATED HEADCOUNT
	RESIDENTS	NON- RESIDENTS	TOTAL	RESIDENTS	NON- RESIDENTS	TOTAL		
ACTUALS								
1980-81	5853	84	5937	3984	91	4075	4238	
1981-82	6313	70	6383	4105	74	4179	4573	12240
1982-83	7045	63	7108	4854	58	4912	5341	13152
1983-84	7308	52	7360	5127	49	5176	5522	14459
1984-85	8244	45	8289	5280	37	5317	5563	13981
1985-86	8243	64	8307	5402	53	5455	5720	13712
1986-87	8756	59	8815	5511	43	5554	5845	13388
* 1987-88	9389	47	9436	5808	40	5848	6073	15297
1988-89	9294	73	9367	5840	53	5893	6530	15769
1989-90	10900	103	11003	6733	86	6819	7584	18843
1990-91	13028	316	13344	7745	173	7918	8596	22256
1991-92	15089	285	15374	9337	232	9569	10243	24794
1992-93	15558	304	15862	9937	243	10180	10775	25018
1993-94	15980	384	16364	10253	322	10575	11449	26365
1994-95	16765	447	17212	10816	378	11194	11846	27956
1995-96	18351	537	18888	11664	432	12096	12431	30643
1996-97	18948	634	19582	11964	488	12452	13002	32652
1997-98	19017	674	19691	12189	542	12731	13216	31816
** 1998-99	17816	637	18453	9949	452	10401	12220	29192
1999-00	19910	673	20583	11304	495	11799	13131	32845
2000-01	20593	701	21294	11718	509	12227	14004	34447
2001-02	22551	863	23414	13011	593	13604	15351	35225
2002-03	22552	602	23154	13689	373	14062	16223	35953
2003-04	22928	849	23777	13624	589	14213	16571	36021
2004-05	23384	1356	24740	13645	675	14320	16520	35757
2005-06	23518	1049	24567	13255	688	13943	15802	35703
2006-07	22671	1151	23822	12954	740	13694	15496	35007
2007-08	22425	1399	23824	12749	861	13610	15322	35410
2008-09	23088	1379	24467	13227	867	14094	16152	36384
2009-10	26510	1213	27723	15341	813	16154	18514	39690
2010-11	27244	1199	28443	15754	813	16567	19179	40348
2011-12	25937	1104	27041	15129	727	15856	18732	39246
2012-13	25122	1039	26161	14661	700	15361		

NOTE: * 1987-88 to 2012-13 actuals are "Budget Related Totals", not the "Institution FTE and HC Totals"

** Semester Conversion

SOURCE: 1980-81 to 1984-85 Utah Board of Regents' Recommended Operating Budgets
1985-86 to 2012-13 Utah Board of Regents' Official Reports

TABLE 2A.
SUMMER TERM, 2012-2013
OFFICIAL ENROLLMENT SUMMARY (BUDGET RELATED)

	<u>AVERAGE</u>	<u>HC</u>	<u>%</u>	<u>FTE</u>	<u>%</u>
2012-13 SUMMER TERM OFFICIAL #'S (BUDGET RELATED IPEDS)		12666		5491.0	
2012-13 SUMMER TERM OFFICIAL #'S (BUDGET RELATED NON-IPEDS)**					
2012-13 SUMMER TERM OFFICIAL #'S (BUDGET RELATED TOTAL)		12666 ***		5491.0	

2011-12 Summer Term Official #'s & % Completed	13367	94.8%	6041.0	90.9%
--	-------	-------	--------	-------

<u>AVERAGE CREDIT HOURS TAKEN</u>					
Resident	6.44	12063	95.2%	5176.0	94.3%
Non-Resident	7.84	603	4.8%	315.0	5.7%
Total	6.50	12666		5491.0	

<u>AVERAGE AGE OF STUDENTS *</u>	
Resident	27.58
Non-Resident	27.61

<u>MALE TO FEMALE RATIO</u>		
Male	6135	48.4%
Female	6531	51.6%
Total	12666	

<u>WHERE STUDENTS COME FROM</u>		
Salt Lake County	9108	71.9%
Utah Excluding SL County	2955	23.3%
US excluding Utah & Foreign Countries	603	4.8%
Total	12666	

<u>LEVELS OF STUDENTS</u>		
First Time Freshmen	1271	10.0%
Other Freshmen	1615	12.8%
Sophomores	9780	77.2%
Total	12666	

* Age is not a completely accurate figure in that some students choose not to release this information.

** Budget Related Non-IPEDS = Budget Related Non-Credit STIT

*** Budget Related Total Headcount will not match Budget Related IPEDS & Non-IPEDS subtotals.

A student is only counted once in the Budget Related Total. A student in both Budget Related types is counted in both.

TABLE 2.

ENROLLMENT BY ACADEMIC DEPARTMENT - SUMMER TERM FTE'S

DEPARTMENT	08-09	09-10	10-11	11-12	12-13
Accounting	54.7	62.3	82.7	99.4	85.7
Apprenticeship/Carpentry-Millwright		0.3			
Apprenticeship/Culinary Arts	18.9	0.4			
Apprenticeship/Electricity-Instrumentation	35.2	18.0	15.0	8.3	8.3
Apprenticeship/General	8.0	7.1	6.4	3.8	4.1
Apprenticeship/HVAC	0.3		0.3		
Apprenticeship/Plumbers-Pipefitters	11.3	7.3	2.0	0.7	4.3
Apprenticeship/Stage Hands			3.0	0.3	
Architectural Tech	4.2	8.7	14.0	12.5	13.3
Architectural Tech (Prison)	13.6	5.7			
ASL/Interpreting	15.0	19.7	16.3	12.4	13.1
Automotive Technician				14.0	12.4
Automotive Technician (Prison)	8.8	7.6			
Aviation Technology/Aviation Maintenance Tech	15.5	13.9	34.9	51.3	43.6
Aviation Technology/Professional Pilot	6.1	9.3	15.3	20.3	18.9
Barbering/Cosmetology	171.6	137.8	130.9	114.6	88.8
Biology	268.4	331.2	434.0	346.5	367.9
Biotechnology	6.7	1.7	5.3	0.7	0.8
Bldg Construction (Prison)	44.1	5.4			
Bldg Construction/Construction Mgt	4.2	5.4	8.9	12.1	11.5
Business Economics	97.6	109.4	140.8	121.6	119.0
Business Management	108.2	125.6	152.7	127.8	104.5
Chemistry	214.4	261.4	291.6	241.1	230.7
Communication	151.7	185.7	208.4	210.5	185.0
Computer Info Systems	164.3	165.6	218.8	246.8	155.9
Computer Science	31.5	33.5	43.1	57.6	71.5
Criminal Justice	76.7	115.9	154.2	173.3	115.0
Culinary Arts		31.7	52.3	36.9	40.9
Culinary Arts (Prison)	31.3	11.3			
Dental Hygiene	1.0	1.2			
Developmental Education	417.4	512.6	664.4	723.3	
Developmental Math					361.2
Developmental Reading					76.5
Developmental Writing					109.6
Education	15.3	24.4	29.8	35.2	34.8
Electronics & Instrumentation Tech	26.8	17.6	6.2		
Electronics (Prison)	30.4				
Engineering	40.9	37.3	61.1	74.3	71.4
Engineering Design/Drafting Tech	10.8	16.8	12.6	17.4	19.4
Engineering Design/Drafting Tech (Prison)	1.6				
English	364.1	386.3	452.0	499.7	558.3
English Second Language	35.1	38.2	33.6	40.1	32.1
Environmental Technology	7.1	7.0	4.8		
Family & Human Studies	38.4	38.1	46.8	42.0	43.8
Fashion Institute	8.2	11.2	19.5	16.0	25.6
Finance and Credit	34.0	33.1	50.5	53.7	53.9
Fine Arts	154.3	172.7	205.2	228.0	185.2
Geosciences	48.0	71.9	91.5	91.7	96.8
Health & Lifetime Activities	205.2	237.3	298.9	357.9	268.8
History/Anthropology	119.8	131.8	156.2	203.2	159.2
Humanities	110.5	145.8	171.6	196.4	167.0
Interior Design	13.6	9.8	17.4	12.9	14.5
Languages	41.4	40.3	40.1	59.6	45.9
Learning Enhancements					121.5
Marketing	8.4	16.6	23.0	25.1	25.3
Mathematics	475.6	577.2	672.0	648.9	557.2
Medical Assistant	38.9	62.0	90.8	71.5	76.6
Medical Lab Technology	1.0				
Mortuary Science					6.8
Nursing	27.8	22.7	27.4	19.3	25.1
Occupational Therapy Asst	3.5	3.6	3.3	4.1	4.9
Paralegal Studies	32.7	34.6	40.1	49.1	33.4
Physical Therapist Asst	14.7	15.3	14.7	14.0	14.0
Physics	88.5	94.0	99.0	88.1	85.7
Political Science	38.6	41.3	52.3	50.3	50.1
Psychology	125.0	152.0	166.4	197.7	178.0
Radiologic Technology	20.4	26.4	20.9	24.1	18.5
Social Work	8.8	15.6	16.6	21.2	12.4
Sociology	66.0	74.8	77.4	66.8	56.4
Surgical Technology	3.2	4.4	3.2	2.8	2.8
Surveying	0.8		2.8	1.8	0.6
Visual Art & Design	107.3	116.6	158.3	169.9	182.1
Visual Art & Design (Prison)	7.0				
Welding	8.6	11.6	14.7	22.4	20.4
Total	4363.0	4884.0	5876.0	6041.0	5491.0

NOTE: Index code (ACBSSP) is included in the different departments.

SOURCE: Official End of Term Enrollment Summary by Departments, 2008-2009 to 2012-2013

TABLE 3A.
FALL SEMESTER, 2012-2013
OFFICIAL ENROLLMENT SUMMARY (BUDGET RELATED)

	<u>AVERAGE</u>	<u>HC</u>	<u>%</u>	<u>FTE</u>	<u>%</u>
2012-13 FALL SEMESTER OFFICIAL #S (BUDGET RELATED IPEDS)		26042		15361.0	
2012-13 FALL SEMESTER OFFICIAL #S (BUDGET RELATED NON-IPEDS)**		160			
2012-13 FALL SEMESTER OFFICIAL #S (BUDGET RELATED TOTAL)		26161 ***		15361.0	

2011-12 Fall Semester Official #'s & % Completed	27041	96.7%	15856.0	96.9%
--	-------	-------	---------	-------

<u>AVERAGE CREDIT HOURS TAKEN</u>					
Resident	8.75	25122	96.0%	14661.0	95.4%
Non-Resident	10.11	1039	4.0%	700.0	4.6%
Total	8.81	26161		15361.0	

<u>AVERAGE AGE OF STUDENTS *</u>	
Resident	27.23
Non-Resident	27.24

<u>MALE TO FEMALE RATIO</u>		
Male	13012	49.7%
Female	13149	50.3%
Total	26161	

<u>WHERE STUDENTS COME FROM</u>		
Salt Lake County	19298	73.8%
Utah Excluding SL County	5824	22.3%
US Excluding Utah/Foreign Countries	1039	3.9%
Total	26161	

<u>LEVELS OF STUDENTS</u>		
First Time Freshmen	3186	12.2%
Other Freshmen	5590	21.4%
Sophomores	17385	66.4%
Total	26161	

* Age is not a completely accurate figure in that some students choose not to release this information.
 ** Budget Related Non-IPEDS = Budget Related Non-Credit STIT
 *** Budget Related Total Headcount will not match Budget Related IPEDS & Non-IPEDS subtotals.
 A student is only counted once in the Budget Related Total. A student in both Budget Related types is counted in both.

TABLE 3.

ENROLLMENT BY ACADEMIC DEPARTMENT - FALL SEMESTER FTE'S

DEPARTMENT	08-09	09-10	10-11	11-12	12-13
Accounting	208.4	208.3	244.7	252.4	253.5
Apprenticeship/Carpentry-Millwright	45.0	8.3	3.0		
Apprenticeship/Culinary Arts	64.8	1.3			
Apprenticeship/Electricity-Instrumentation	140.3	102.9	76.3	69.3	62.3
Apprenticeship/General	33.6	17.3	16.2	6.9	7.4
Apprenticeship/HVAC	13.3	10.3	9.7	5.7	7.0
Apprenticeship/Lineman		25.7	16.7		
Apprenticeship/Plumbers-Pipefitters	186.3	160.5	117.5	84.1	76.7
Apprenticeship/Stage Hands	6.7	4.7	9.3	7.3	5.7
Architectural Tech	83.7	84.4	83.1	71.2	65.0
Architectural Tech (Prison)	38.6				
ASL/Interpreting	77.4	97.2	75.4	61.0	56.1
Automotive Collision Repair & Painting	25.6	29.6	25.6	30.7	28.0
Automotive Technician	70.4	109.7	123.9	111.2	102.6
Automotive Technician (Prison)	26.4				
Aviation Technology/Aviation Maintenance Tech	59.7	74.4	102.9	115.0	109.9
Aviation Technology/Professional Pilot	43.3	50.6	68.7	65.1	72.1
Barbering/Cosmetology	340.3	230.1	219.8	217.3	183.7
Biology	861.7	1022.4	1008.3	969.3	936.0
Biotechnology	13.8	16.5	22.3	31.9	24.6
Bldg Construction (Prison)	56.3				
Bldg Construction/Construction Mgt	57.1	53.0	64.1	57.4	47.1
Business Economics	239.2	249.0	295.6	257.6	252.6
Business Management	350.6	346.1	374.5	315.3	284.7
Chemistry	429.2	486.5	460.1	398.3	382.1
Communication	585.0	653.4	756.0	694.2	652.1
Computer Info Systems	576.3	645.9	718.8	684.5	425.4
Computer Science	79.2	113.3	129.5	142.8	179.6
Criminal Justice	173.6	255.3	310.4	340.4	279.1
Culinary Arts		88.0	127.0	106.6	95.4
Culinary Arts (Prison)	24.4				
Dental Hygiene	47.9	51.2	36.0	27.9	25.8
Developmental Education	1489.7	1968.6	1847.2	1773.6	
Developmental Math					896.5
Developmental Reading					233.1
Developmental Writing					340.1
Diesel Systems Technology	13.8	30.4	44.6	40.1	40.1
Education	64.4	97.3	134.7	123.7	125.5
Electronics & Instrumentation Tech	48.1	25.4	6.8		
Electronics (Prison)	28.7				
Engineering	77.2	106.3	122.3	150.4	146.3
Engineering Design/Drafting Tech	49.2	56.9	64.1	69.1	62.5
Engineering Design/Drafting Tech (Prison)	2.0				
English	809.7	1142.7	869.3	891.9	1032.4
English Second Language	78.1	88.3	70.7	75.5	88.3
Environmental Technology	19.8	18.5	11.2		
Family & Human Studies	179.1	238.1	292.1	201.7	170.7
Fashion Institute	51.5	86.7	99.6	116.5	113.2
Finance and Credit	136.9	141.9	162.6	144.5	143.5
Fine Arts	485.2	552.9	673.6	635.6	644.6
Geosciences	195.3	220.3	240.7	222.8	246.5
Health & Lifetime Activities	562.5	635.6	745.4	738.2	696.4
History/Anthropology	523.6	581.0	642.6	568.7	638.6
Humanities	466.9	486.2	499.6	559.3	531.1
Interior Design	57.7	58.7	73.3	80.3	56.5
Languages	239.1	250.0	269.0	275.3	261.8
Learning Enhancement					310.2
Marketing	54.8	83.0	109.2	95.2	112.2
Mathematics	1259.9	1487.9	1423.8	1445.5	1400.1
Medical Assistant	86.1	146.0	154.1	98.8	93.1
Mortuary Science					11.7
Non-Destructive Testing Tech	19.7	23.6	24.0	23.7	14.4
Nursing	212.0	236.1	225.3	232.9	222.3
Occupational Therapy Asst	32.2	35.6	38.7	39.2	43.4
Paralegal Studies	81.0	104.2	120.2	114.4	100.4
Physical Therapist Asst	57.5	63.4	59.2	61.4	60.3
Physics	218.5	255.2	251.0	238.5	248.1
Political Science	142.7	155.5	179.1	160.6	157.4
Psychology	476.7	576.3	561.1	527.7	529.6
Radiologic Technology	69.3	67.7	65.5	57.1	53.7
Social Work	66.4	71.9	99.0	92.1	84.0
Sociology	231.4	261.1	280.6	265.4	240.2
Surgical Technology	21.2	21.6	22.1	32.1	22.0
Surveying	33.8	26.2	21.8	23.6	15.3
Visual Art & Design	438.5	482.0	495.9	479.1	485.7
Visual Art & Design (Prison)	9.8				
Welding	45.9	75.0	71.6	78.1	74.7
COLLEGE GRAND TOTALS	14094.0	16154.0	16567.0	15856.0	15361.0

NOTE: Index code (ACBSSP) is included in the different departments.

SOURCE: Official Third Week Enrollment Summary by Departments, 2008-2009 to 2012-2013

TABLE 4A.
SPRING SEMESTER, 2012-2013
OFFICIAL ENROLLMENT SUMMARY (BUDGET RELATED)

	<u>AVERAGE</u>	<u>HC</u>	<u>%</u>	<u>FTE</u>	<u>%</u>
2012-13 SPRING SEMESTER OFFICIAL #'S (BUDGET RELATED IPEDS)		25788		15065.0	
2012-13 SPRING SEMESTER OFFICIAL #'S (BUDGET RELATED NON-IPEDS)**		118			
2012-13 SPRING SEMESTER OFFICIAL #'S (BUDGET RELATED TOTAL)		25873 ***		15065.0	

2011-12 Spring Semester Official #'s & % Completed	27022	95.7%	15815.0	95.3%
--	-------	-------	---------	-------

<u>AVERAGE CREDIT HOURS TAKEN</u>					
Resident	8.68	24970	96.5%	14445.0	95.9%
Non-Resident	10.30	903	3.5%	620.0	4.1%
Total	8.73	25873		15065.0	

<u>AVERAGE AGE OF STUDENTS *</u>	
Resident	26.22
Non-Resident	26.27

<u>MALE TO FEMALE RATIO</u>		
Male	13018	50.3%
Female	12855	49.7%
Total	25873	

<u>WHERE STUDENTS COME FROM</u>		
Salt Lake County	19088	73.8%
Utah Excluding SL County	5882	22.7%
US Excluding Utah & Foreign Countries	903	3.5%
Total	25873	

<u>LEVELS OF STUDENTS</u>		
First Time Freshmen	1614	6.2%
Other Freshmen	6036	23.3%
Sophomores	18223	70.5%
Total	25873	

* Age is not a completely accurate figure in that some students choose not to release this information.

** Budget Related Non-IPEDS = Budget Related Non-Credit STIT

*** Budget Related Total Headcount will not match Budget Related IPEDS & Non-IPEDS subtotals.

A student is only counted once in the Budget Related Total. A student in both Budget Related types is counted in both.

TABLE 4.

ENROLLMENT BY ACADEMIC DEPARTMENT - SPRING SEMESTER FTE'S

DEPARTMENT	08-09	09-10	10-11	11-12	12-13
Accounting	207.2	230.0	243.8	251.7	246.1
Apprenticeship/Carpentry-Millwright	11.0	35.3	27.3	20.0	
Apprenticeship/Culinary Arts	58.0				
Apprenticeship/Electricity-Instrumentation	117.4	94.3	78.3	69.7	66.3
Apprenticeship/General	31.9	7.9	9.1	8.8	2.0
Apprenticeship/HVAC	11.7	8.7	7.3	6.0	5.0
Apprenticeship/Lineman		22.3	18.3	20.3	
Apprenticeship/Plumbers-Pipefitters	178.3	142.5	115.7	75.1	81.5
Apprenticeship/Stage Hands	4.0	5.0	6.3	5.7	4.0
Architectural Tech	72.3	75.7	73.9	53.3	63.9
Architectural Tech (Prison)	23.8				
ASL/Interpreting	87.0	102.6	75.3	66.3	63.9
Automotive Collision Repair & Painting	21.3	26.4	26.5	34.3	27.1
Automotive Technician	59.8	113.1	111.8	110.8	101.5
Automotive Technician (Prison)	28.0				
Aviation Technology/Aviation Maintenance Tech	56.1	91.5	115.9	136.4	119.5
Aviation Technology/Professional Pilot	35.0	54.0	64.3	56.4	100.1
Barbering/Cosmetology	323.0	255.8	225.3	200.0	149.0
Biology	862.3	1116.9	1037.8	1023.3	945.3
Biotechnology	15.6	27.7	25.1	26.5	27.4
Bldg Construction/Construction Mgt	56.3	50.6	58.7	50.7	46.9
Bldg Construction (Prison)	60.7				
Business Economics	238.6	257.4	269.2	243.8	229.8
Business Management	345.0	348.9	344.3	323.0	309.0
Chemistry	442.5	453.8	441.5	431.5	405.6
Communication	523.4	623.7	705.4	708.7	651.6
Computer Info Systems	541.9	624.3	625.8	593.5	338.5
Computer Science	89.5	127.6	153.5	168.8	197.7
Criminal Justice	208.5	282.0	319.9	278.7	273.6
Culinary Arts		101.2	109.3	97.9	82.1
Culinary Arts (Prison)	32.2				
Dental Hygiene	45.0	46.7	32.9	25.0	25.1
Developmental Education	1415.6	1754.1	1667.8	1741.6	
Developmental Math					916.1
Developmental Reading					198.5
Developmental Writing					286.5
Diesel Systems Technology	14.5	28.4	41.5	44.1	36.2
Education	83.3	117.0	125.4	127.9	123.9
Electronics & Instrumentation Tech	36.8	15.9	7.9		
Electronics (Prison)	9.2				
Engineering	97.8	114.8	146.5	164.8	149.2
Engineering Design/Drafting Tech	41.3	60.3	63.9	61.9	63.5
Engineering Design/Drafting Tech (Prison)	5.6				
English	874.6	1155.8	941.7	1008.2	1141.9
English Second Language	75.3	70.0	71.1	72.8	64.7
Environmental Technology	19.9	17.3	14.0		
Family & Human Studies	132.1	162.2	176.8	148.9	150.5
Fashion Institute	62.9	85.0	94.9	109.3	108.2
Finance and Credit	127.1	133.7	121.3	143.6	129.3
Fine Arts	486.5	572.2	684.6	674.4	637.4
Geosciences	185.6	223.3	245.5	264.9	253.5
Health Information Technology					22.1
Health & Lifetime Activities	591.1	693.9	772.7	705.1	662.9
History/Anthropology	520.8	585.1	640.4	648.8	599.6
Humanities	449.0	512.4	551.0	499.0	429.8
Interior Design	49.1	53.7	70.7	66.6	54.4
Languages	219.1	255.8	258.5	208.5	195.1
Learning Enhancement					266.1
Marketing	64.2	78.6	88.6	84.2	104.7
Mathematics	1257.6	1511.4	1408.6	1428.1	1478.9
Medical Assistant	93.5	145.6	112.1	117.7	93.3
Mortuary Science				9.3	13.5
Non-Destructive Testing Tech	15.9	22.3	16.2	16.0	23.2
Nursing	220.3	203.2	223.7	221.2	229.7
Occupational Therapy Asst	37.5	35.6	41.2	46.7	45.8
Paralegal Studies	79.7	104.4	109.7	104.6	93.1
Physical Therapist Asst	39.2	41.7	41.0	35.2	38.5
Physics	247.6	284.6	285.7	257.7	245.4
Political Science	151.8	152.2	157.8	154.7	167.5
Psychology	452.1	559.7	548.2	535.1	499.1
Radiologic Technology	65.9	61.7	65.0	58.6	58.8
Social Work	66.1	73.9	87.9	86.4	97.1
Sociology	223.4	237.2	261.8	246.6	200.6
Surgical Technology	12.9	12.8	11.2	12.0	9.6
Surveying	27.3	25.7	22.3	23.4	16.4
Visual Art & Design	440.1	482.6	481.0	523.4	526.1
Visual Art & Design (Prison)	4.7				
Welding	47.7	73.0	71.3	77.5	71.8
TOTAL	13832.0	16043.0	16052.0	15815.0	15065.0

NOTE: Index Code (ACBSSP) is included in the different departments.

SOURCE: Official Third Week Enrollment Summary by Departments, 2008-2009 to 2012-2013

TABLE 5.

2011-2012 ENROLLMENT BY ACADEMIC DEPARTMENT - ANNUALIZED FTE'S

DEPARTMENT	SUMMER END OF TERM 2011-2012	FALL END OF TERM 2011-2012	SPRING END OF TERM 2011-2012	ANNUALIZED FTE'S (AFTE'S) 2011-2012
Accounting	99.4	249.5	248.5	298.7
Apprenticeship/Carpentry-Millwright			20.0	10.0
Apprenticeship/Electricity-Instrumentation	8.3	69.0	69.7	73.5
Apprenticeship/General	3.8	5.7	9.4	9.4
Apprenticeship/HVAC		6.3	6.3	6.3
Apprenticeship/Lineman			20.3	10.2
Apprenticeship/Plumbers-Pipefitters	0.7	84.0	76.2	80.5
Apprenticeship/Stage Hands	0.3	8.7	5.7	7.3
Architectural Tech	12.5	69.9	53.1	67.8
ASL/Interpreting	12.4	60.0	66.0	69.2
Automotive Collision Repair & Painting		29.9	35.7	32.8
Automotive Technician	14.0	105.5	106.6	113.1
Aviation Technology/Aviation Maintenance Tech	51.3	115.7	136.4	151.7
Aviation Technology/Professional Pilot	20.3	64.3	57.2	70.9
Barbering/Cosmetology	114.6	214.1	200.7	264.7
Biology	346.5	958.2	1010.9	1157.8
Biotechnology	0.7	32.0	26.3	29.5
Bldg Construction/Construction Mgt	12.1	58.3	54.6	62.5
Business Economics	121.6	254.2	242.8	309.3
Business Management	127.8	311.3	320.7	379.9
Chemistry	241.1	394.4	428.5	532.0
Communication	210.5	693.8	704.1	804.1
Computer Info Systems	246.8	671.4	584.3	751.3
Computer Science	57.6	144.3	167.3	184.6
Criminal Justice	173.3	336.0	277.7	393.5
Culinary Arts	36.9	104.4	95.3	118.3
Dental Hygiene		27.1	25.1	26.1
Developmental Education	723.3	1748.2	1724.2	2097.8
Diesel Systems Technology		43.3	45.1	44.2
Education	35.2	122.3	127.3	142.4
Engineering	74.3	149.2	163.3	193.4
Engineering Design/Drafting Tech	17.4	69.3	60.1	73.4
English	499.7	891.9	1002.8	1197.1
English Second Language	40.1	76.7	71.8	94.3
Family & Human Studies	42.0	202.4	153.0	198.7
Fashion Institute	16.0	115.7	108.9	120.3
Finance and Credit	53.7	143.9	142.0	169.8
Fine Arts	228.0	628.0	675.6	765.8
Geosciences	91.7	222.5	263.9	289.0
Health & Lifetime Activities	357.9	732.9	702.2	896.5
History/Anthropology	203.2	562.4	639.9	702.8
Humanities	196.4	552.9	496.4	622.9
Interior Design	12.9	79.7	66.4	79.5
Languages	59.6	266.5	207.5	266.8
Marketing	25.1	94.3	83.3	101.3
Mathematics	648.9	1428.5	1415.3	1746.4
Medical Assistant	71.5	98.1	116.4	143.0
Mortuary Science			9.1	4.6
Non-Destructive Testing Tech		21.0	14.9	17.9
Nursing	19.3	231.6	219.1	235.0
Occupational Therapy Asst	4.1	45.7	47.2	48.5
Paralegal Studies	49.1	113.6	104.6	133.6
Physical Therapist Asst	14.0	55.1	35.6	52.4
Physics	88.1	238.5	257.1	291.8
Political Science	50.3	159.2	156.3	182.9
Psychology	197.7	517.7	531.3	623.4
Radiologic Technology	24.1	57.1	58.6	69.9
Short-Term Intensive Training		20.0		10.0
Social Work	21.2	91.5	87.3	100.0
Sociology	66.8	263.0	243.6	286.7
Surgical Technology	2.8	31.3	12.1	23.1
Surveying	1.8	22.9	22.5	23.6
Visual Art & Design	169.9	469.3	520.1	579.7
Welding	22.4	76.8	77.8	88.5
COLLEGE GRAND TOTALS	6041.0	15711.0	15712.0	18732.0

SOURCE: Official Enrollment Summary by Departments, Summer, Fall, & Spring End of Term, 2011-2012

TABLE 6.

ENROLLMENT BY ACADEMIC DEPARTMENT - ANNUALIZED FTE'S

DEPARTMENT	2007-2008	2008-2009	2009-2010	2010-2011	2011-2012
Accounting	250.6	232.9	247.7	282.8	298.7
Apprenticeship/Carpentry-Millwright	54.2	28.0	22.0	15.2	10.0
Apprenticeship/Culinary Arts	54.6	76.1	1.0		
Apprenticeship/Electricity-Instrumentation	160.5	146.7	107.8	84.5	73.5
Apprenticeship/General	68.0	36.7	17.6	16.2	9.4
Apprenticeship/HVAC	11.4	12.7	9.5	9.2	6.3
Apprenticeship/Ironworkers	5.7				
Apprenticeship/Lineman			24.0	17.8	10.2
Apprenticeship/Plumbers-Pipefitters	225.0	197.4	155.6	118.2	80.5
Apprenticeship/Stage Hands	5.7	5.4	5.9	9.5	7.3
Architectural Tech	87.8	79.4	83.5	84.1	67.8
Architectural Tech (Prison)		34.3	2.9		
ASL/Interpreting	87.4	89.0	112.0	83.5	69.2
Automotive Collision Repair & Painting	16.6	22.9	29.0	26.1	32.8
Automotive Technician	50.6	66.2	107.3	115.2	113.1
Automotive Technician (Prison)	39.0	33.4	3.8		
Aviation Technology/Aviation Maintenance Tech	71.4	66.3	91.3	128.8	151.7
Aviation Technology/Professional Pilot	46.5	42.6	57.2	73.6	70.9
Barbering/Cosmetology	447.3	421.8	309.2	287.1	264.7
Biology	963.5	984.4	1224.6	1230.8	1157.8
Biotechnology	16.9	17.9	23.1	26.0	29.5
Bldg Construction/Construction Mgt	79.6	61.3	55.0	65.3	62.5
Bldg Construction (Prison)	92.8	79.6	2.7		
Business Economics	285.7	285.8	306.9	354.4	309.3
Business Management	382.0	399.5	408.7	435.6	379.9
Chemistry	531.7	540.5	597.3	591.1	532.0
Communication	574.8	625.0	731.8	828.5	804.1
Computer Info Systems	594.0	634.8	714.2	780.1	751.3
Computer Science	73.6	100.9	134.8	161.2	184.6
Criminal Justice	218.1	228.9	324.2	389.5	393.5
Culinary Arts			109.2	142.7	118.3
Culinary Arts (Prison)	45.2	47.7	5.7		
Dental Hygiene	39.0	46.8	50.1	34.5	26.1
Developmental Education	1293.0	1656.0	2118.7	2078.6	2097.8
Diesel Systems Technology	19.5	15.4	30.2	43.3	44.2
Education	59.8	80.5	118.5	143.6	142.4
Electrical & Instrumentation Tech	27.8				
Electronics	26.0				
Electronics & Instrumentation Tech		55.6	29.2	10.4	
Electronics (Prison)	35.1	30.9			
Engineering	117.5	107.7	129.3	164.3	193.4
Engineering Design/Drafting Tech	83.1	51.2	67.3	69.4	73.4
Engineering Design/Drafting Tech (Prison)		3.6			
Engineer Des/Draft Tech/Arch Tech (Prison)	64.9				
English	955.7	1017.9	1331.3	1125.1	1197.1
English Second Language	90.3	96.1	97.4	87.7	94.3
Environmental Technology	21.3	23.3	21.4	14.8	
Family & Human Studies	221.5	205.4	232.4	267.6	198.7
Fashion Institute	45.0	61.0	91.2	106.5	120.3
Finance and Credit	159.4	149.1	153.3	167.8	169.8
Fine Arts	536.0	563.9	653.0	779.3	765.8
Geosciences	208.8	214.3	259.0	289.1	289.0
Health & Lifetime Activities	584.6	675.0	781.5	903.0	896.5
History/Anthropology	554.3	577.9	647.4	713.8	702.8
Humanities	477.4	514.7	572.2	606.8	622.9
Interior Design	53.4	59.8	61.2	79.4	79.5
Languages	251.7	246.2	269.1	277.8	266.8
Marketing	70.5	63.3	89.0	109.4	101.3
Mathematics	1330.9	1484.5	1774.4	1739.9	1746.4
Medical Assistant	95.0	117.2	176.6	181.6	143.0
Medical Lab Technology	5.9	0.5			
Mortuary Science					4.6
Non-Destructive Testing Tech	18.4	17.0	23.0	20.5	17.9
Nursing	197.6	228.9	232.9	237.2	235.0
Occupational Therapy Asst	42.6	39.1	37.7	41.2	48.5
Paralegal Studies	95.0	96.5	121.0	134.3	133.6
Physical Therapist Asst	54.2	52.9	59.4	56.7	52.4
Physics	277.3	275.6	317.3	316.1	291.8
Political Science	161.6	165.4	173.3	195.5	182.9
Psychology	489.3	521.5	640.6	636.3	623.4
Radiologic Technology	85.1	78.2	77.4	75.7	69.9
Short-Term Intensive Training	18.5	21.5	22.0	17.0	10.0
Social Work	78.4	70.8	80.5	101.7	100.0
Sociology	270.7	258.3	283.9	309.6	286.7
Surgical Technology	19.0	18.7	19.4	19.4	23.1
Surveying		31.0	26.4	23.9	23.6
Telecommunications	46.2				
Visual Art & Design	447.8	501.4	540.1	564.1	579.7
Visual Art & Design (Prison)	11.3	10.5			
Welding	40.9	48.3	79.9	79.1	88.5
COLLEGE GRAND TOTALS	15321.5	16151.5	18514.0	19179.0	18732.0

SOURCE: Official Enrollment Summary by Departments, 2007-2008 to 2011-2012

GRAPH 7.

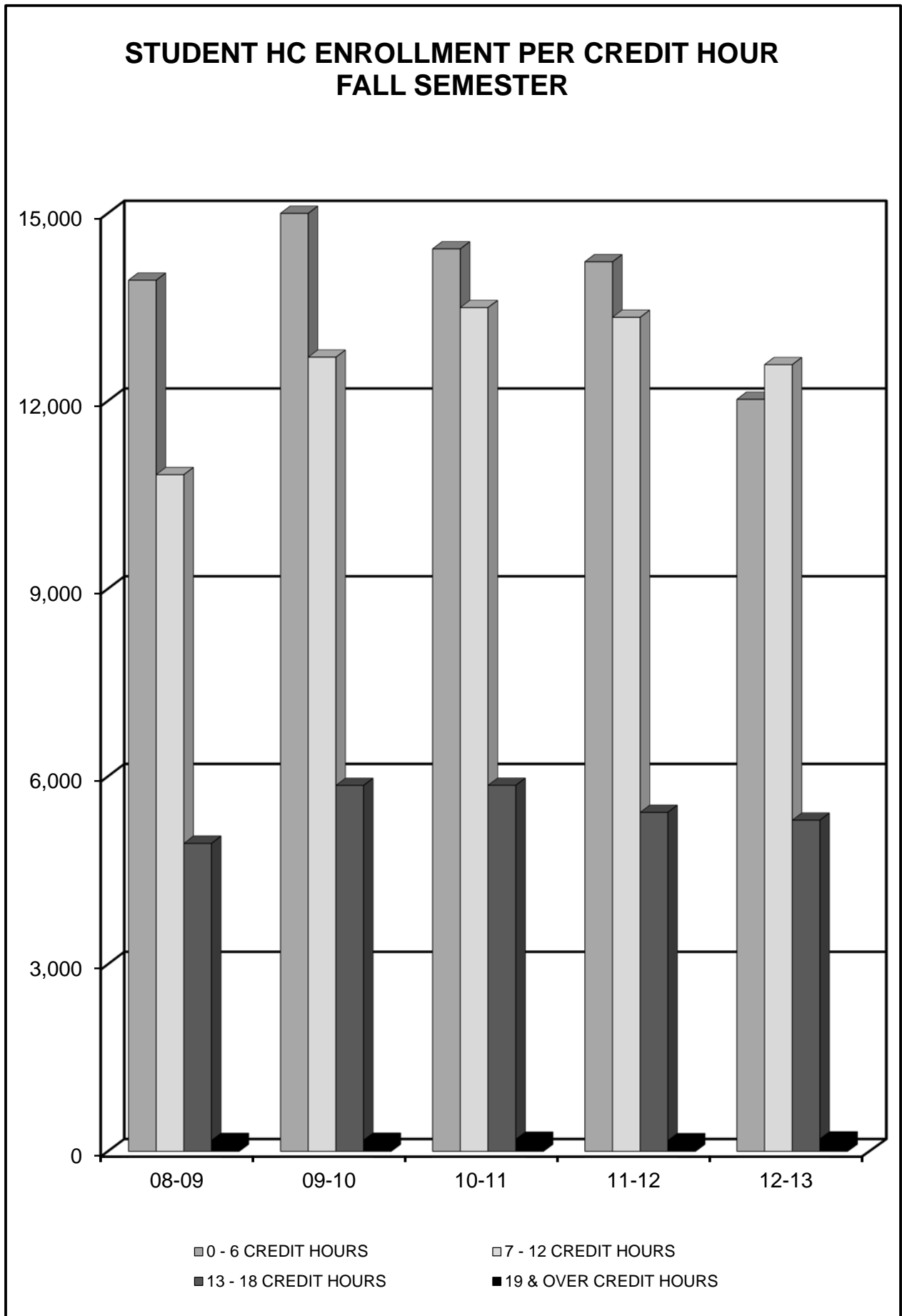


TABLE 7.

STUDENT HEADCOUNT ENROLLMENT PER CREDIT HOUR

FALL HEADCOUNT

Credit Hours	2008-2009		2009-2010		2010-2011		2011-2012		2012-2013	
	HC	% of Total	HC	% of Total	HC	% of Total	HC	% of Total	HC	% of Total
0 - 3	6563	21.97%	6993	20.71%	6291	18.51%	6031	18.19%	4933	16.38%
4 - 6	7368	24.67%	8040	23.80%	8141	23.96%	8195	24.71%	7093	23.56%
7 - 9	5557	18.61%	6317	18.70%	6584	19.37%	6617	19.95%	6216	20.64%
10 - 12	5265	17.63%	6383	18.90%	6909	20.33%	6721	20.26%	6365	21.14%
13 - 15	3825	12.81%	4483	13.27%	4626	13.61%	4275	12.89%	4202	13.95%
16 - 18	1108	3.71%	1374	4.07%	1233	3.63%	1151	3.47%	1099	3.65%
19 - 21	161	0.54%	175	0.52%	186	0.55%	163	0.49%	190	0.63%
Over 21	19	0.06%	9	0.03%	13	0.04%	14	0.04%	14	0.05%
Total	29866		33774		33983		33167		30112	

NOTE: Totals = Institution Grand Totals

SOURCE: Utah Board of Regents' Official Reports, Fall Semester, 2008-2009 to 2012-2013

TABLE 8.

**SALT LAKE COMMUNITY COLLEGE
AVERAGE CREDIT HOURS TAKEN**

SUMMER TERM	RESIDENTS	NON-RESIDENTS	TOTAL
1998-99	8.15	12.49	8.39
1999-00	5.16	7.43	5.29
2000-01	5.69	7.37	5.78
2001-02	5.92	7.75	6.04
2002-03	6.26	7.33	6.32
2003-04	6.44	7.42	6.49
2004-05	6.47	7.56	6.53
2005-06	6.32	7.59	6.40
2006-07	6.22	7.38	6.29
2007-08	6.14	6.96	6.19
2008-09	6.22	7.32	6.30
2009-10	6.43	7.28	6.47
2010-11	6.67	7.61	6.72
2011-12	6.73	7.74	6.78
2012-13	6.44	7.84	6.50

FALL SEMESTER			
1998-99	8.38	10.64	8.45
1999-00	8.52	11.03	8.60
2000-01	8.54	10.89	8.61
2001-02	8.02	10.71	8.72
2002-03	9.10	9.29	9.11
2003-04	8.91	10.41	8.97
2004-05	8.75	7.47	8.68
2005-06	8.45	9.84	8.51
2006-07	8.57	9.64	8.62
2007-08	8.53	9.23	8.57
2008-09	8.59	9.43	8.64
2009-10	8.68	10.05	8.74
2010-11	8.67	10.17	8.74
2011-12	8.75	9.88	8.80
2012-13	8.75	10.11	8.81

SPRING SEMESTER			
1998-99	8.42	10.78	8.51
1999-00	8.20	10.94	8.28
2000-01	8.65	10.33	8.10
2001-02	8.71	9.85	8.75
2002-03	9.03	10.04	9.06
2003-04	8.81	10.19	8.86
2004-05	8.81	9.87	8.85
2005-06	8.56	9.85	8.61
2006-07	8.47	9.32	8.51
2007-08	8.45	9.18	8.49
2008-09	8.58	9.71	8.64
2009-10	8.79	9.84	8.83
2010-11	8.79	9.93	8.83
2011-12	8.73	10.03	8.78
2012-13	8.68	10.30	8.73

SOURCE: Utah Board of Regents' Official Reports, 1998-99 to 2012-2013

**TABLE 9.
FALL 2008-2009 TO 2012-2013 AVERAGE CLASS SIZE**

DEPARTMENT	2008-2009	2009-2010	2010-2011	2011-2012	2012-2013 ***	Average
Accounting	18.05	19.75	22.57	23.35	21.61	21.07
Apprenticeship/Carpentry-Millwright	15.00	8.33	9.00			10.78
Apprenticeship/Culinary Arts	17.00	1.00				9.00
Apprenticeship/Electricity-Instrumentation	16.19	11.88	15.27	13.87	14.54	14.30
Apprenticeship/General	9.87	3.81	9.00	6.00	6.00	6.94
Apprenticeship/HVAC	8.00	6.20	5.80	4.25	9.50	6.75
Apprenticeship/Lineman			2.17			2.17
Apprenticeship/Plumbers-Pipefitters	12.85	12.72	11.67	8.88	9.49	11.12
Apprenticeship/Stage Hands	5.00	8.50	7.00	7.33	5.67	6.70
Architectural Technology	17.68	17.17	17.00	14.78	15.55	16.44
Architectural Technology (Prison) **	21.75					21.75
ASL/Interpreting	10.38	12.47	11.33	10.57	10.85	11.12
Automotive Collision Repair & Painting	16.00	18.50	16.00	19.25	17.50	17.45
Automotive Technician	12.36	19.14	22.11	18.06	19.00	18.13
Automotive Technician (Prison) **	9.92					9.92
Aviation Technology/Aviation Maintenance Tech	11.18	11.38	16.75	17.85	17.92	15.02
Aviation Technology/Professional Pilot	10.79	14.47	13.34	12.96	15.26	13.36
Barbering/Cosmetology	16.53	17.92	16.77	16.19	13.73	16.23
Biology	24.52	26.44	25.99	24.94	23.77	25.13
Biotechnology	7.88	6.42	9.79	9.55	7.55	8.24
Bldg Construction/Construction Mgt	9.83	10.67	14.10	15.12	11.74	12.29
Bldg Construction (Prison) **	6.78					6.78
Business Economics	21.36	23.47	27.89	26.29	26.31	25.06
Business Management	20.51	19.44	21.28	18.99	17.05	19.45
Chemistry	24.40	25.42	25.84	22.71	22.94	24.26
Communication	19.18	21.46	23.12	22.14	20.44	21.27
Computer Info Systems	21.66	23.61	25.86	25.20	19.76	23.22
Computer Science	14.16	15.08	15.92	18.44	17.65	16.25
Criminal Justice	11.76	16.26	19.99	19.73	17.68	17.08
Culinary Arts		20.85	26.65	19.54	17.67	21.18
Culinary Arts (Prison) **	10.91					10.91
Dental Hygiene	26.50	27.69	19.38	15.62	14.62	20.76
Developmental Math					20.79	20.79
Developmental Reading					19.10	19.10
Developmental Writing					19.28	19.28
Developmental Education	19.86	23.00	20.75	20.88		21.12
Diesel Systems Technology	11.50	14.17	22.13	17.78	17.78	16.67
Education	16.80	23.27	27.08	27.08	27.42	24.33
Electronics & Instrumentation Tech **	8.92	7.59	3.75			6.75
Electronics (Prison) **	16.67					16.67
Engineering	8.54	9.97	10.69	11.51	13.32	10.81
Engineering Design/Drafting Tech	11.52	13.32	13.52	14.47	13.59	13.28
Engineering Design/Drafting Tech (Prison) **	15.00					15.00
English	21.67	23.32	21.86	21.88	22.18	22.18
English Second Language	14.29	20.18	14.92	17.50	21.60	17.70
Environmental Technology **	13.13	13.71	11.20			12.68
Family & Human Studies	14.66	15.79	17.92	15.82	24.37 *	17.71
Fashion Institute	12.08	19.26	19.03	18.38	14.56	16.66
Finance and Credit	19.94	22.03	23.71	23.68	24.90	22.85
Fine Arts	13.16	16.39	18.85	15.25	24.82	17.69
Geosciences	19.15	18.68	23.13	23.88	24.13	21.79
Health & Lifetime Activities	16.64	18.46	21.29	20.26	21.55	19.64
History/Anthropology	23.19	26.45	30.89	29.00	29.32	27.77
Humanities *	23.85	28.06	29.39	29.48	27.71	27.70
Interior Design	12.00	14.10	16.05	16.42	13.38	14.39
Languages	15.19	18.34	19.47	19.51	19.27	18.36
Learning Enhancement					22.71	22.71
Marketing	12.29	13.14	18.78	17.60	19.09	16.18
Mathematics	26.47	29.44	28.97	29.16	27.06	28.22
Medical Assistant	13.21	22.20	22.26	19.10	20.38	19.43
Mortuary Science					11.50	11.50
Non-Destructive Testing Tech	16.33	23.29	13.75	18.75	13.25	17.07
Nursing	16.06	16.29	17.63	17.88	17.52	17.08
Occupational Therapy Asst	12.68	14.21	14.70	14.80	17.16	14.71
Paralegal Studies	13.00	16.55	16.67	16.26	15.15	15.53
Physical Therapist Asst	13.71	16.08	14.75	17.14	16.63	15.66
Physics	20.20	22.28	23.20	24.51	24.38	22.91
Political Science	23.03	26.60	30.43	30.00	30.27	28.07
Psychology	25.65	28.85	29.23	29.32	28.79	28.37
Radiologic Technology	26.53	24.94	23.88	21.19	20.67	23.44
Short-Term Intensive Training (Non-credit)	9.00	5.29	4.67	4.39	6.14	5.90
Social Work	17.05	23.12	27.11	28.59	24.72	24.12
Sociology	28.22	31.95	31.89	30.86	28.60	30.30
Surgical Technology	9.13	9.88	11.29	11.89	9.25	10.29
Surveying	14.92	11.08	10.25	12.18	6.85	11.06
Visual Art & Design	13.74	14.35	14.23	14.92	17.78	15.00
Visual Art & Design (Prison) **	16.33					16.33
Welding	8.23	13.05	11.50	15.65	14.90	12.67
COLLEGE AVERAGE CLASS SIZE	18.30	20.40	21.36	20.87	21.08	20.40

NOTE: Index code (ACBSSP) is distributed throughout the appropriate index code/department.
 Courses with "0" enrollment were excluded.
 * FHS 0010/0020 were excluded.
 ** Program eliminated.
 *** Cross-listed courses are combined.

TAB B. STEP AHEAD

STUDENT DEMOGRAPHICS

Salt Lake Community College served 30,112 students in credit and non-credit programs during Fall Semester 2012 (not including the Division of Applied Technology). This is 18% of all students reported by the Utah System of Higher Education. (This does not include the counts within workshops and specialized training programs offered by the Division of Applied Technology.)

Salt Lake Community College's Non-white population is the largest of all USHE institutions. One notable change in SLCC's demographics is an increase in female students attending the College. Since Fall Semester 2003-2004, the number of female students attending the College has increased by 14.4%, while the number of male students has increased by 6.0%.

Fast Facts

- Fall 12-13 Average Age = 27.23
- Fall 12-13 Non-white Population = 19.9%
- Fall 12-13 Female to Male Ratio = 1.01:1

TABLE 10.
STUDENT ENROLLMENT BY MAJORS
Fall Headcount (Credit Students)

DEPARTMENT	08-09	09-10	10-11	11-12	12-13
Accounting	245	287	318	267	312
Air-Conditioning, Refrigeration & Heating	44	37	32	19	21
Apprenticeship (all)	1020	764	601	498	439
Architectural Technology	296	229	227	207	185
ASL/Interpreting	128	131	139	119	106
Automotive Collision Repair & Painting	28	47	34	60	54
Automotive Technician	158	168	182	146	149
Aviation Technology/Aviation Maintenance Tech	90	106	123	150	139
Aviation Technology/Professional Pilot	148	188	224	237	253
Barbering/Cosmetology	504	365	345	330	227
Biology	269	309	374	410	466
Biotechnology	55	70	99	127	131
Broadcast Video/Audio Production	6	20	24	16	12
Building Construction/Construction Mgt (all)	351	258	226	169	130
Business	1427	1563	1574	1785	1750
Business Management	357	362	382	350	393
Chemistry	162	199	188	214	193
Communication (all)	267	190	281	246	322
Computer Info Systems	238	298	332	311	311
Computer Science	332	339	366	508	590
Continuing Ed Programs	59	55	39	33	25
Criminal Justice	447	560	677	700	657
Culinary Arts	162	174	237	224	229
Dental Hygiene	55	57	40	33	29
Diesel Systems Technology	56	51	66	55	61
Economics	41	41	53	54	53
Education	426	554	507	571	587
Electrical & Instrumentation Tech ***	25				
Electronics & Instrumentation Tech		81	34	27	2
Electronics Technology	84				
Energy Management			31	30	23
Engineering (all)	452	646	724	757	867
Engineering Design/Drafting Tech	92	110	135	197	174
English	194	246	259	314	286
Environmental Technology	28	37	19	10	7
Family & Human Studies	55	65	69	133	129
Fashion Institute	43	86	111	138	175
Film Production Technician	57	71	96	111	142
Finance and Credit	69	74	71	65	66
Fitness Technician	43	80	112	102	93
General Studies *	14372	17135	16429	14767	11622
Geosciences	36	51	59	83	85
Health Sciences **	2577	3326	3571	3458	3516
History	107	123	129	140	142
Humanities	56	66	74	145	120
Interior Design		71	98	107	93
International Studies	68	83	72	85	56
Marketing Mgt	76	91	94	109	87
Mathematics	17	41	76	94	101
Medical Assistant	138	230	279	268	238
Medical Lab Technology	7	2	2	2	
Mortuary Science				1	52
Music	96	107	130	112	117
Non-Destructive Testing Tech	32	37	26	17	19
Nursing **	472	468	372	474	477
Occupational Therapy Asst	37	44	44	49	47
Para Education	21	12	41	29	24
Paralegal Studies	172	237	241	227	215
Physical Therapist Asst	59	57	51	50	51
Physics	36	43	50	63	68
Political Science	79	81	75	84	78
Psychology	354	429	479	517	495
Radiologic Technology	86	84	79	68	65
Social Sciences	2		1	1	
Social Work	210	224	278	329	341
Sociology	95	120	140	172	149
Surgical Technology	21	33	26	24	20
Surveying	70	52	46	40	34
Unknown		4	5		
Visual Art & Design (all)	474	590	555	682	797
Welding	52	72	74	79	70
COLLEGE GRAND TOTALS	28385	32831	32947	31999	28967

NOTE: Due to the reporting procedures, the report equals "IPEDS Total" or credit students, not the "Budget Related or the Institution Total".
 * Due to the reporting procedures, concurrent enrollment students are in the report for third week, starting 2008-2009.
 ** Health Sciences includes students with an AAS in a specific area earning an AS in Health Science, and students in all health-related programs prior to their formal admittance into those specific programs. Nursing numbers previously included all health science students and are now separately identified.
 *** Students are combined with Apprenticeship/Electricity-Instrumentation.
 Studies have found this report to be about 80% accurate.
 SOURCE: Utah Board of Regents' Official Reports, Fall Semester, 2008-2009 to 2012-2013

TABLE 11.
STUDENT ENROLLMENT BY MAJORS AND BY GENDER
Fall Headcount (Credit Students)

Department	2008-09		2009-10		2010-11		2011-12		2012-13	
	Male	Female	Male	Female	Male	Female	Male	Female	Male	Female
Accounting	94	151	108	179	119	199	101	166	103	209
Air-Conditioning, Refrigeration & Heating	43	1	37	0	31	1	19	0	21	0
Apprenticeship (all)	995	25	745	19	584	17	484	14	430	9
Architectural Technology	245	51	183	46	191	36	171	36	144	41
ASL/Interpreting	11	117	14	117	15	124	14	105	15	91
Automotive Collision Repair & Painting	26	2	43	4	33	1	58	2	50	4
Automotive Technician	153	5	158	10	172	10	142	4	143	6
Aviation Technology/Aviation Maintenance Tech	87	3	104	2	117	6	143	7	127	12
Aviation Technology/Professional Pilot	133	15	166	22	202	22	218	19	232	21
Barbering/Cosmetology	28	476	14	351	25	320	20	310	15	212
Biology	149	120	158	151	220	154	219	191	226	240
Biotechnology	26	29	36	34	53	46	61	66	77	54
Broadcast Video/Audio Production	4	2	14	6	21	3	13	3	10	2
Building Construction/Construction Mgt (all)	320	31	244	14	216	10	161	8	119	11
Business	935	492	977	586	957	617	1096	689	1073	677
Business Management	230	127	228	134	219	163	219	131	230	163
Chemistry	105	57	128	71	123	65	130	84	122	71
Communication (all)	146	121	97	93	152	129	111	135	165	157
Computer Info Systems	197	41	247	51	279	53	260	51	262	49
Computer Science	301	31	311	28	328	38	460	48	528	62
Continuing Ed Programs	24	35	14	41	15	24	16	17	8	17
Criminal Justice	261	186	354	206	416	261	432	268	397	260
Culinary Arts	86	76	91	83	130	107	120	104	101	128
Dental Hygiene	1	54	1	56	0	40	1	32	1	28
Diesel Systems Technology	56	0	50	1	64	2	54	1	59	2
Economics	34	7	31	10	43	10	45	9	44	9
Education	95	331	124	430	93	414	116	455	118	469
Electrical & Instrumentation Tech ***	24	1								
Electronics & Instrumentation Tech			77	4	31	3	26	1	2	0
Electronics Technology	82	2								
Energy Management					27	4	25	5	20	3
Engineering (all)	414	38	591	55	649	75	681	76	772	95
Engineering Design/Drafting Tech	73	19	92	18	117	18	179	18	159	15
English	65	129	80	166	100	159	110	204	88	198
Environmental Technology	15	13	24	13	14	5	7	3	6	1
Family & Human Studies	5	50	6	59	7	62	17	116	17	112
Fashion Institute	2	41	12	74	10	101	8	130	11	164
Film Production Technician	41	16	56	15	81	15	85	26	106	36
Finance and Credit	34	35	42	32	43	28	35	30	43	23
Fitness Technician	20	23	41	39	65	47	59	43	46	47
General Studies *	7139	7233	8403	8732	7907	8522	6984	7783	5565	6057
Geosciences	26	10	34	17	37	22	54	29	57	28
Health Sciences **	512	2065	722	2604	864	2707	848	2610	875	2641
History	58	49	76	47	79	50	74	66	79	63
Humanities	18	38	23	43	32	42	48	97	43	77
Interior Design	1	49	4	67	2	96	4	103	7	86
International Studies	47	21	47	36	37	35	46	39	31	25
Marketing Mgt	42	34	55	36	56	38	56	53	48	39
Mathematics	10	7	24	17	37	39	48	46	55	46
Medical Assistant	25	113	33	197	41	238	44	224	28	210
Medical Lab Technology	3	4	1	1	0	2	0	2		
Mortuary Science							0	1	17	35
Music	57	39	67	40	74	56	73	39	78	39
Non-Destructive Testing Tech	27	5	30	7	23	3	16	1	19	0
Nursing **	94	378	98	370	68	304	88	386	91	386
Occupational Therapy Asst	6	31	7	37	10	34	10	39	9	38
Para Education	3	18	3	9	8	33	7	22	5	19
Paralegal Studies	31	141	53	184	48	193	39	188	42	173
Physical Therapist Asst	18	41	14	43	9	42	10	40	11	40
Physics	27	9	36	7	41	9	51	12	59	9
Political Science	50	29	57	24	50	25	55	29	49	29
Psychology	115	239	146	283	145	334	159	358	165	330
Radiologic Technology	25	61	33	51	28	51	22	46	23	42
Social Sciences	0	2			0	1	0	1		
Social Work	39	171	44	180	80	198	89	240	85	256
Sociology	33	62	37	83	43	97	55	117	46	103
Surgical Technology	6	15	11	22	3	23	9	15	6	14
Surveying	65	5	50	2	43	3	37	3	32	2
Unknown			4	0	1	4				
Visual Art & Design (all)	205	269	308	282	266	289	346	336	414	383
Welding	49	3	70	2	72	2	74	5	66	4
COLLEGE GRAND TOTALS	14291	14094	16188	16643	16066	16881	15462	16537	14095	14872

NOTE: Due to the reporting procedures, the report equals "IPEDS Total" or credit students, not the "Budget Related or the Institution total".

* Due to the reporting procedures, concurrent enrollment students are in the report for third week, starting 2008-2009.

** Health Sciences includes students with an AAS in a specific area earning an AS in Health Science, and students in all health-related programs prior to their formal admittance into those specific programs. Nursing numbers previously included all health science students and are now separately identified.

*** Students are combined with Apprenticeship/Electricity-Instrumentation.

Studies have found this report to be about 80% accurate.

SOURCE: Utah Board of Regents' Official Reports, Fall Semester, 2008-2009 to 2012-2013

GRAPH 12.

**WHERE STUDENTS LIVE BY ZIP CODE
FALL 2012-2013 HEADCOUNT
ZIP CODES WITH 50 OR MORE STUDENTS**

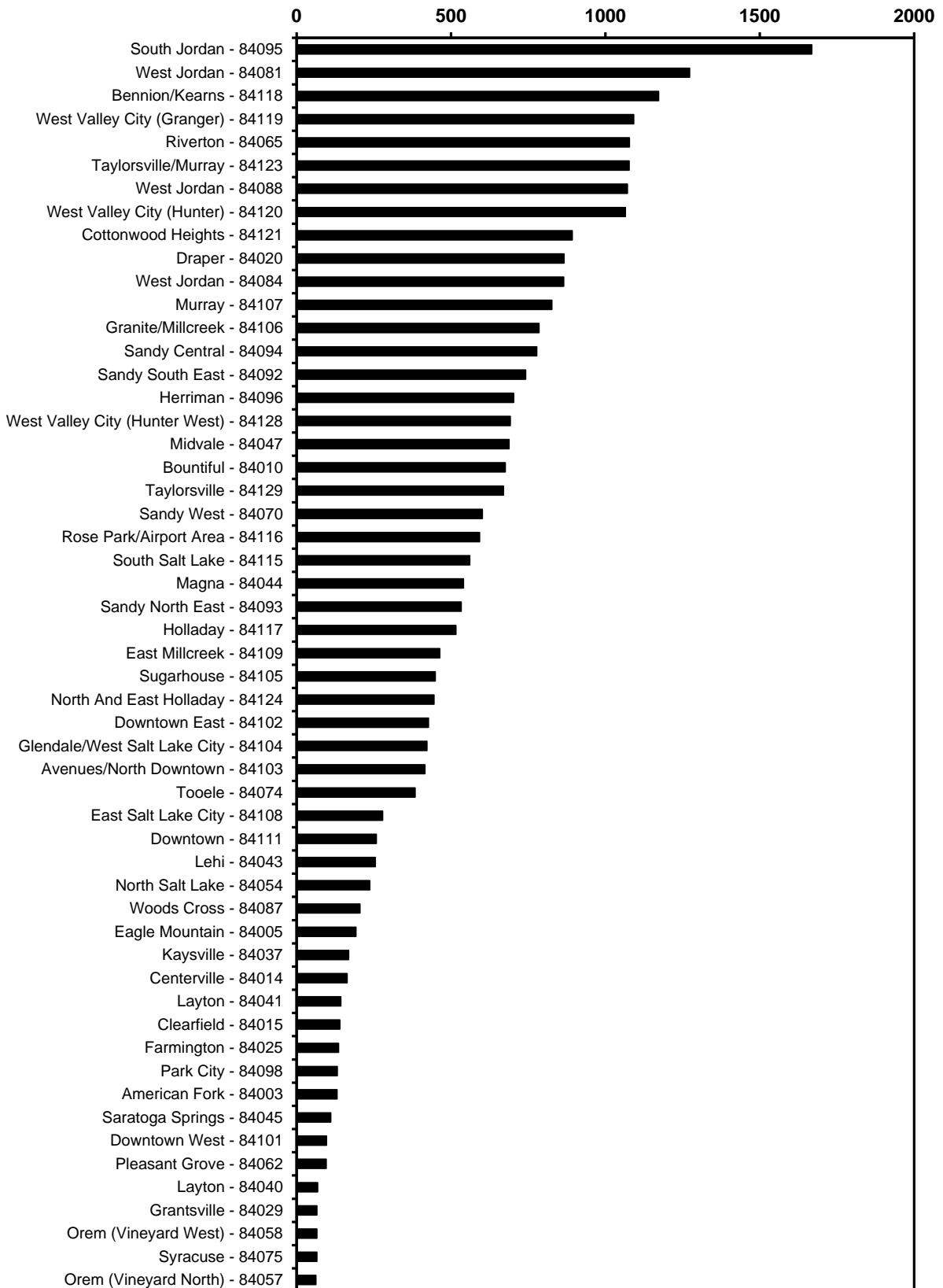


TABLE 12.

WHERE STUDENTS LIVE BY ZIP CODE

**Fall 2012-2013 Headcount
Zip Codes with 50 or more students**

ZIP CODE	LOCATION	NUMBER OF STUDENTS	PERCENT OF TOTAL
84095	South Jordan	1,669	5.54%
84081	West Jordan (New Zip Code as of July 2008)	1,273	4.23%
84118	Bennion/Kearns	1,173	3.90%
84119	West Valley City (Granger)	1,092	3.63%
84065	Riverton	1,078	3.58%
84123	Taylorsville/Murray	1,077	3.58%
84088	West Jordan	1,072	3.56%
84120	West Valley City (Hunter)	1,065	3.54%
84121	Cottonwood Heights	893	2.97%
84020	Draper	866	2.88%
84084	West Jordan	865	2.87%
84107	Murray	827	2.75%
84106	Granite/Millcreek	785	2.61%
84094	Sandy Central	778	2.58%
84092	Sandy South East	742	2.46%
84096	Herriman	703	2.33%
84128	West Valley City (Hunter West)	692	2.30%
84047	Midvale	688	2.28%
84010	Bountiful	676	2.24%
84129	Taylorsville	670	2.23%
84070	Sandy West	602	2.00%
84116	Rose Park/Airport Area	593	1.97%
84115	South Salt Lake	561	1.86%
84044	Magna	541	1.80%
84093	Sandy North East	533	1.77%
84117	Holladay	516	1.71%
84109	East Millcreek	464	1.54%
84105	Sugarhouse	449	1.49%
84124	North and East Holladay	445	1.48%
84102	Downtown East	427	1.42%
84104	Glendale/West Salt Lake City	422	1.40%
84103	Avenues/North Downtown	416	1.38%
84074	Tooele	384	1.28%
84108	East Salt Lake City	279	0.93%
84111	Downtown	258	0.86%
84043	Lehi	255	0.85%
84054	North Salt Lake	237	0.79%
84087	Woods Cross	205	0.68%
84005	Eagle Mountain	192	0.64%
84037	Kaysville	169	0.56%
84014	Centerville	164	0.54%
84041	Layton	143	0.47%
84015	Clearfield	140	0.46%
84025	Farmington	136	0.45%
84098	Park City	132	0.44%
84003	American Fork	131	0.44%
84045	Saratoga Springs	111	0.37%
84101	Downtown West	97	0.32%
84062	Pleasant Grove	96	0.32%
84040	Layton	68	0.23%
84029	Grantsville	66	0.22%
84058	Orem (Vineyard West)	66	0.22%
84075	Syracuse	66	0.22%
84057	Orem (Vineyard North)	63	0.21%
Total of this list		28,111	93.35%
Total in other zip codes & Unknown		2,001	6.65%
College Total, Fall Semester, 2012-2013		30,112	100.00%

NOTE: The report equals "Institution Total"

SOURCE: Utah Board of Regents' Official Report, Fall Semester, 2012-2013

TABLE 13.
STUDENT DISTRIBUTION BY AGE AND GENDER
Fall Headcount

Number of Students						
A G E	GENDER	08-09 *	09-10 *	10-11 *	11-12 *	12-13 *
<u>Under 18</u>	Males	1746	2412	2135	2067	452
	Females	2475	3321	3098	2969	731
	Total	4221 **	5733 **	5233 **	5036 **	1183
<u>18 - 19</u>	Males	2161	2346	2346	2133	1726
	Females	2670	2906	2973	2856	2269
	Total	4831	5252	5319	4989	3995
<u>20 - 21</u>	Males	2007	2206	2075	1970	1862
	Females	2205	2418	2459	2360	2648
	Total	4212	4624	4534	4330	4510
<u>22 - 24</u>	Males	3202	3271	3227	3028	3097
	Females	2004	2312	2360	2330	2574
	Total	5206	5583	5587	5358	5671
<u>25 - 29</u>	Males	2794	3160	3226	3056	3377
	Females	1851	2242	2399	2326	2615
	Total	4645	5402	5625	5382	5992
<u>30 - 34</u>	Males	1077	1357	1528	1587	1714
	Females	1018	1267	1345	1422	1550
	Total	2095	2624	2873	3009	3264
<u>35 - 39</u>	Males	538	604	647	691	832
	Females	628	776	887	864	912
	Total	1166	1380	1534	1555	1744
<u>Over 39</u>	Males	752	810	864	907	1031
	Females	1234	1379	1349	1399	1569
	Total	1986	2189	2213	2306	2600
<u>Unknown</u>	Males	14	22	18	23	4
	Females	9	22	11	11	4
	Total	23	44	29	34	8
Total	Males	14291	16188	16066	15462	14095
	Females	14094	16643	16881	16537	14872
Total Students		28385	32831	32947	31999	28967

NOTE: * Due to the reporting procedures, the report equals "IPEDS Total".

** Due to changes in reporting procedures, a higher number of concurrent enrollment students were captured in 3rd week.

SOURCE: Utah Board of Regents' Official Reports, Fall Semester, 2008-2009 to 2012-2013

TABLE 14.
STUDENT DISTRIBUTION BY RACIAL BACKGROUND AND GENDER
Fall Headcount

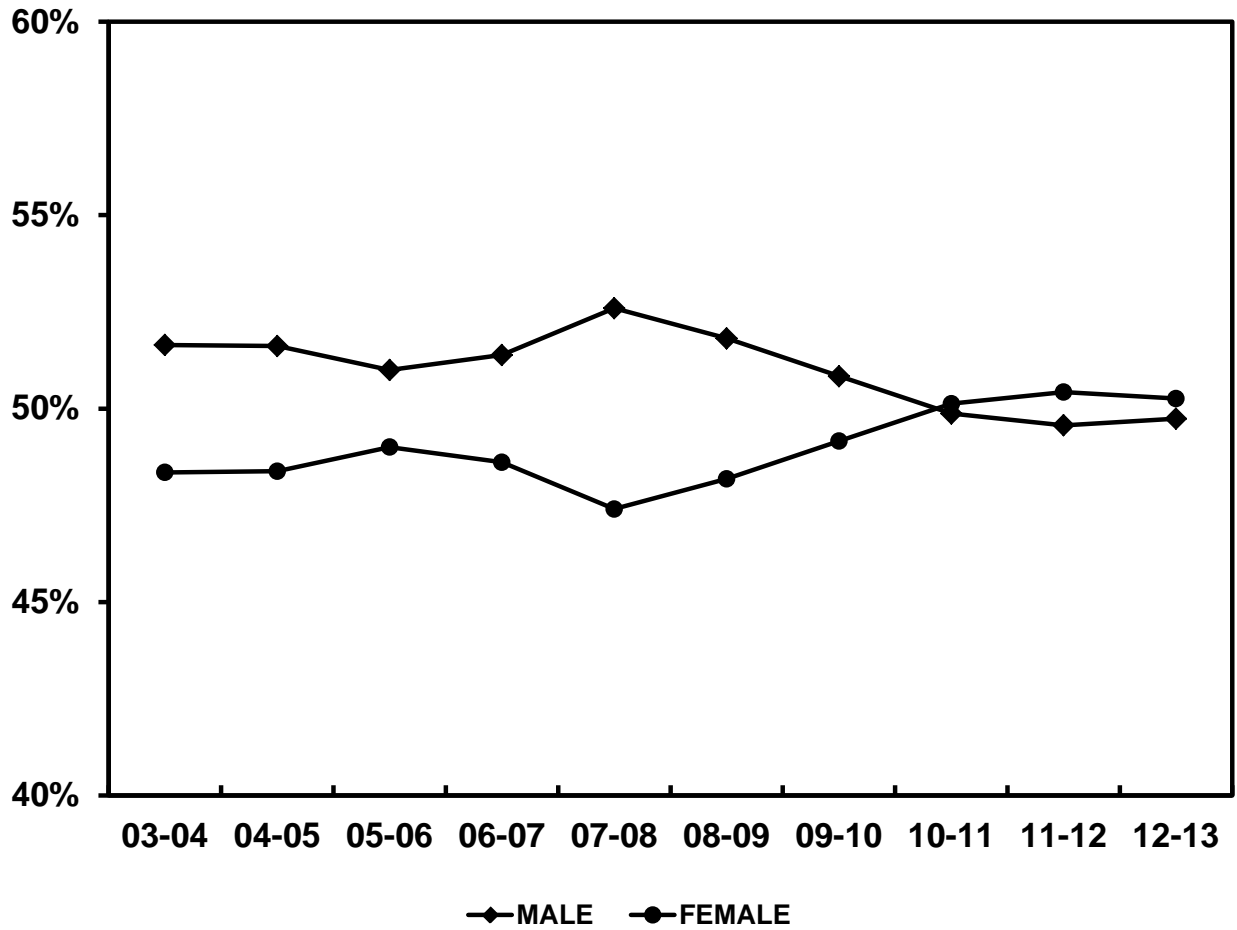
		Number of Students				
Race	Gender *	08-09 *	09-10 *	10-11 *	11-12 *	12-13 *
Non-Resident/ Alien	Males	193	217	204	197	207
	Females	164	190	174	157	147
	Total	357	407	378	354	354
% of Total		1.26%	1.24%	1.15%	1.11%	1.22%
Black Non- Hispanic	Males	276	331	350	350	336
	Females	198	274	285	300	282
	Total	474	605	635	650	618
% of Total		1.67%	1.84%	1.93%	2.03%	2.13%
Amer. Indian/ Alaskan Nat	Males	152	157	131	113	99
	Females	172	209	204	164	141
	Total	324	366	335	277	240
% of Total		1.14%	1.11%	1.02%	0.87%	0.83%
Asian/Pac. Islander	Males	603	741	708	642	580
	Females	700	840	826	796	756
	Total	1,303	1,581	1,534	1,438	1,336
% of Total		4.59%	4.82%	4.66%	4.49%	4.61%
Hispanic	Males	1,158	1,338	1,433	1,558	1,608
	Females	1,290	1,509	1,667	1,854	1,958
	Total	2,448	2,847	3,100	3,412	3,566
% of Total		8.62%	8.67%	9.41%	10.66%	12.31%
White Non- Hispanic	Males	10,809	12,313	11,695	10,697	9,913
	Females	10,568	12,541	11,834	10,828	9,758
	Total	21,377	24,854	23,529	21,525	19,671
% of Total		75.31%	75.71%	71.41%	67.27%	67.92%
More Than One Race	Males				123	190
	Females				141	216
	Total				264	406
% of Total					0.83%	1.40%
Race/Ethnicity Unknown	Males	1,100	1,091	1,545	1,782	1,162
	Females	1,002	1,080	1,891	2,297	1,614
	Total	2,102	2,171	3,436	4,079	2,776
% of Total		7.41%	6.61%	10.42%	12.74%	9.58%
College Totals	Males	14,291	16,188	16,066	15,462	14,095
	Females	14,094	16,643	16,881	16,537	14,872
	Total	28,385	32,831	32,947	31,999	28,967

NOTE: * Due to the reporting procedures, the report equals "IPEDS Total" or "Total Credit Students", not the "Budget Related" or the "Institution Total".

SOURCE: Utah Board of Regents' Official Reports, 2008-2009 to 2012-2013

GRAPH/TABLE 15.

**MALE TO FEMALE RATIOS
FALL SEMESTER**



MALE TO FEMALE RATIOS FALL SEMESTER										
	03-04	04-05	05-06	06-07	07-08	08-09	09-10	10-11	11-12	12-13
MALE	12280	12771	12528	12241	12530	12678	14094	14185	13404	13012
FEMALE	11497	11969	12039	11581	11294	11789	13629	14258	13637	13149
TOTAL	23777	24740	24567	23822	23824	24467	27723	28443	27041	26161
MALE	51.65%	51.62%	51.00%	51.39%	52.59%	51.82%	50.84%	49.87%	49.57%	49.74%
FEMALE	48.35%	48.38%	49.00%	48.61%	47.41%	48.18%	49.16%	50.13%	50.43%	50.26%

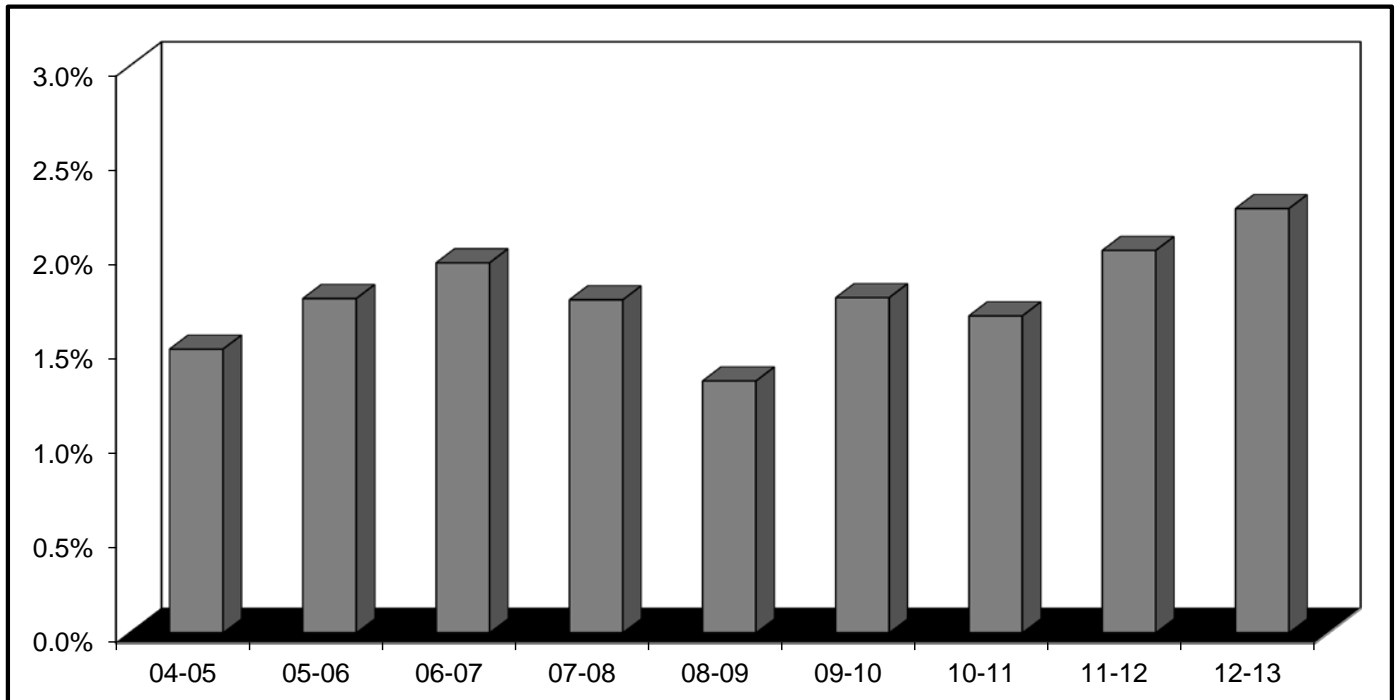
NOTE: Totals equal "Total of All Budget Related", not the "IPEDS" or the "Institution Total".
 SOURCE: Utah Board of Regents' Official Reports, 2003-2004 to 2012-2013

TABLE/GRAPH 16.

**VETERANS CURRENTLY ELIGIBLE TO RECEIVE BENEFITS
BY ACADEMIC CLASSIFICATION
FALL HEADCOUNT**

Academic Classification	04-05	05-06	06-07	07-08	08-09	09-10	10-11	11-12	12-13
Vocational or Technical	212	224	240	250	205	322	260	354	339
Non-Vocational or Non-Technical	174	228	252	193	193	277	310	317	337
TOTAL	386	452	492	443	398	599	570	671	676
All Other Students	25325	25099	24637	24701	29468	33175	33413	32496	29436
GRAND TOTAL	25711	25551	25129	25144	29866	33774	33983	33167	30112
Percent Veterans	1.5%	1.8%	2.0%	1.8%	1.3%	1.8%	1.7%	2.0%	2.2%

**VETERANS CURRENTLY ELIGIBLE TO RECEIVE BENEFITS
FALL HEADCOUNT
BY PERCENT**



NOTE: Totals = "Institution Total"

SOURCE: Utah Board of Regents' Official Reports, Fall Semester, 2004-2005 to 2012-2013

TABLE 17.

**SALT LAKE COMMUNITY COLLEGE
AVERAGE AGE OF STUDENTS**

SUMMER TERM	RESIDENTS			NON-RESIDENTS		
	MALE	FEMALE	TOTAL	MALE	FEMALE	TOTAL
1998-99	27.71	27.08	27.39	27.74	27.12	27.41
1999-00	26.96	26.21	26.59	27.03	26.29	26.63
2000-01	26.93	26.35	26.64	26.98	26.43	26.68
2001-02	27.70	26.87	27.31	27.58	26.86	27.29
2002-03	27.08	26.85	26.97	27.06	26.77	26.99
2003-04	26.94	27.06	27.03	26.85	27.12	27.05
2004-05	26.79	27.03	26.92	26.82	27.04	26.89
2005-06	26.90	26.80	26.86	26.87	26.71	26.84
2006-07	27.26	26.97	27.08	27.18	27.02	27.12
2007-08	27.20	26.99	26.98	27.16	26.99	27.01
2008-09	26.95	27.09	27.03	26.92	27.04	27.01
2009-10	26.88	27.04	26.96	26.84	27.08	26.99
2010-11	27.24	27.21	27.22	27.28	27.21	27.23
2011-12	27.53	27.50	27.52	27.49	27.54	27.50
2012-13	27.54	57.62	27.58	27.47	27.65	27.61
FALL SEMESTER						
1998-99	27.48	26.48	27.01	27.45	26.43	27.04
1999-00	26.07	25.59	25.85	26.06	25.63	25.90
2000-01	25.48	25.39	25.44	25.55	25.34	25.49
2001-02	25.56	25.42	25.54	25.48	25.68	25.60
2002-03	25.76	25.86	25.81	25.72	25.85	25.79
2003-04	25.18	25.66	25.45	25.15	25.65	25.48
2004-05	25.63	26.14	25.93	25.67	26.11	25.91
2005-06	26.05	26.70	26.46	26.08	26.76	26.45
2006-07	25.92	26.32	26.19	25.90	26.27	26.18
2007-08	26.02	26.48	26.27	26.04	26.51	26.23
2008-09	25.51	25.42	25.43	25.52	25.37	25.41
2009-10	24.97	25.11	25.04	24.96	25.14	25.12
2010-11	25.39	25.30	25.35	25.43	25.29	25.31
2011-12	25.80	25.48	25.64	25.82	25.39	25.62
2012-13	27.35	27.13	27.23	27.30	27.03	27.24
SPRING SEMESTER						
1998-99	25.88	25.67	25.78	25.84	25.65	25.81
1999-00	N/A	N/A	N/A	N/A	N/A	N/A
2000-01	25.85	25.78	25.81	25.65	25.90	25.85
2001-02	25.64	25.72	25.68	25.54	25.83	25.75
2002-03	24.80	24.92	24.85	24.76	24.92	24.81
2003-04	25.69	26.09	25.89	25.61	26.10	25.90
2004-05	25.74	26.35	26.06	25.76	26.38	26.05
2005-06	25.84	26.52	26.27	25.88	26.46	26.25
2006-07	26.01	26.58	26.32	26.06	26.60	26.33
2007-08	26.08	26.39	26.23	26.11	26.42	26.24
2008-09	25.99	26.14	26.05	25.96	26.13	26.07
2009-10	26.13	26.50	26.31	26.15	26.51	26.28
2010-11	26.14	26.41	26.28	26.16	26.48	26.31
2011-12	26.21	26.11	26.16	26.21	26.13	26.20
2012-13	26.11	26.34	26.22	26.10	26.34	26.27

NOTE: Age is not a completely accurate figure, in that some students choose not to release this information.

SOURCE: Utah Board of Regents' Official Reports, 1998-1999 to 2012-2013

TAB C. STEP AHEAD

FACULTY/STAFF

Salt Lake Community College makes every effort to provide a quality higher education for all students. To do this, SLCC hires qualified and dedicated faculty and other professionals to provide the appropriate learning opportunities for students. During the 2011-2012 year, SLCC's student-to-faculty ratio increased by 5% over 2010-2011.

Fast Facts

- 2011-2012 Full-time Equivalent Faculty = 831.7
- 2011-2012 Full-time Equivalent Staff = 586.7
- 2011-2012 Student to Faculty Ratio = 22.52
- % of Instruction Taught by Part-time Faculty = 61.8%

TABLE 18.**2011-2012 STUDENT TO FACULTY RATIOS (ANNUALIZED)**

DEPARTMENT	2011-2012
Accounting	25.16
Apprenticeship (all)	16.44
Architectural Technology	10.34
ASL/Interpreting	10.89
Automotive Collision Repair & Painting	12.56
Automotive Technician	9.74
Aviation Technology/Aviation Maintenance Tech	13.89
Aviation Technology/Professional Pilot	11.03
Barbering/Cosmetology	7.90
Biology	27.97
Biotechnology	9.85
Bldg Construction/Construction Mgt	10.78
Business Economics	29.72
Business Management	23.18
Chemistry	26.18
Communication	26.69
Computer Info Systems	28.35
Computer Science	17.43
Criminal Justice	24.21
Culinary Arts	11.01
Dental Hygiene	3.59
Developmental Education	23.45
Diesel Systems Technology	13.91
Education	35.75
Engineering	13.63
Engineering Design/Drafting Tech	9.98
English	24.77
English Second Language	32.96
Family & Human Studies	30.02
Fashion Institute	22.15
Finance and Credit	26.33
Fine Arts	29.98
Geosciences	26.74
Health & Lifetime Activities	24.92
History/Anthropology	33.41
Humanities	33.41
Interior Design	20.67
Languages	20.93
Marketing	17.80
Mathematics	32.96
Medical Assistant	16.09
Mortuary Science	5.74
Non-Destructive Testing Tech	12.00
Nursing	12.00
Occupational Therapy Asst	12.52
Paralegal Studies	17.37
Physical Therapist Asst	11.36
Physics	31.20
Political Science	30.43
Psychology	32.33
Radiologic Technology	15.91
Short-Term Intensive Training	3.35
Social Work	34.20
Sociology	32.30
Surgical Technology	12.39
Surveying	8.77
Visual Art & Design	14.08
Welding	9.40
COLLEGE STUDENT TO FACULTY RATIO	22.52

NOTE: A formula is used to determine the FTE equivalent for hourly faculty.

GRAPH 19.

**SALT LAKE COMMUNITY COLLEGE
STUDENT TO FACULTY/STAFF RATIOS**

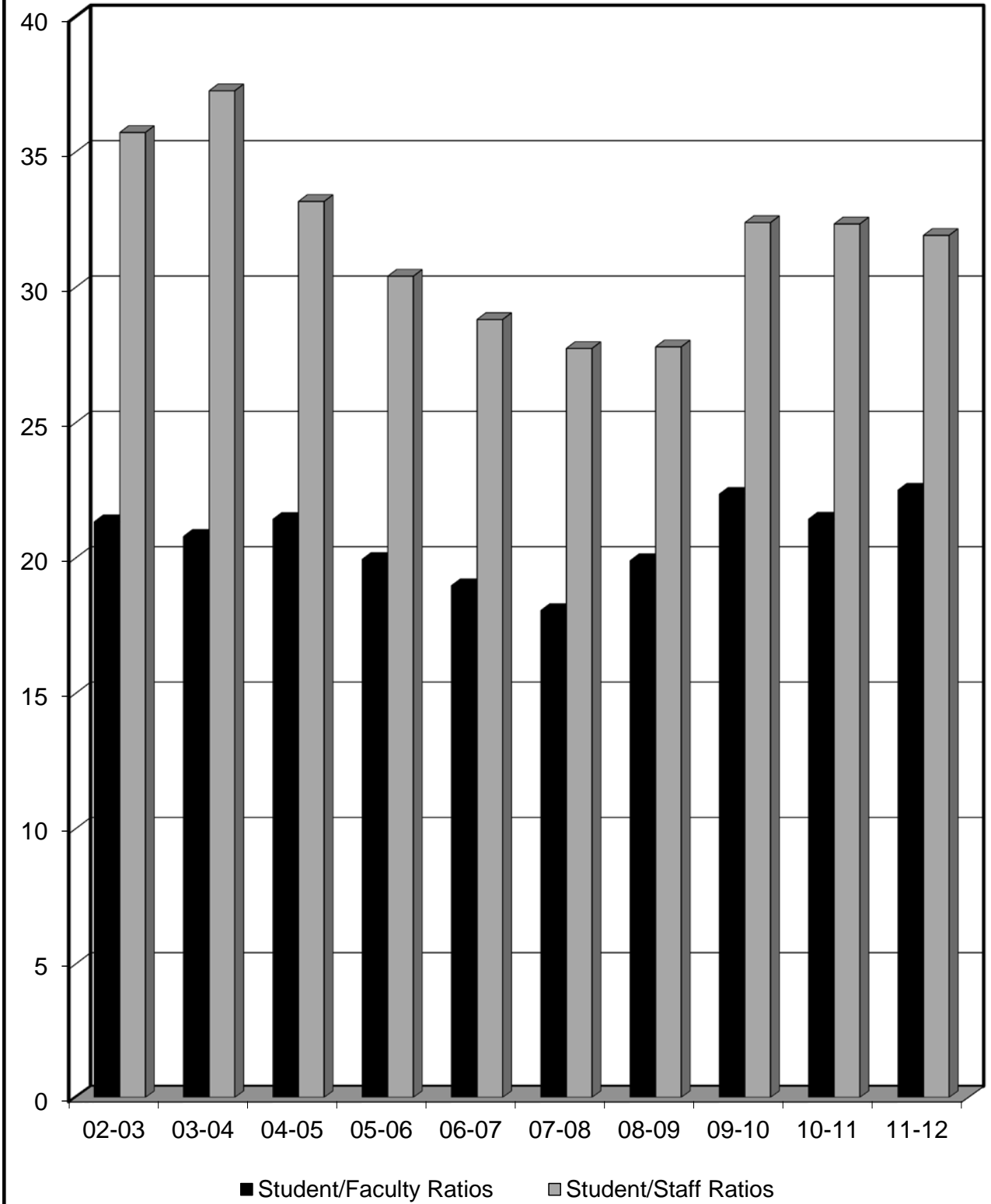


TABLE 19.**STUDENT/FACULTY AND STUDENT/STAFF RATIOS****Education and General - Academic Year and Summer
Counting Hourly Faculty**

Year	Student/Faculty Ratio	Student/Staff Ratio
1990-91	19.54	34.03
1991-92	19.99	33.54
1992-93	20.10	32.57
1993-94	20.30	30.65
1994-95	17.63	29.70
1995-96	17.60	28.68
1996-97	18.22	29.83
1997-98	18.79	29.35
1998-99	18.17	26.40
1999-00	18.85	27.32
2000-01	19.00	28.47
2001-02	20.08	30.48
2002-03	21.35	35.73
2003-04	20.81	37.27
2004-05	21.44	33.18
2005-06	19.96	30.42
2006-07	18.99	28.82
2007-08	18.07	27.75
2008-09	19.91	27.81
2009-10	22.37	32.40
2010-11	21.45	32.35
2011-12	22.52	31.93

FTE STUDENTS, FACULTY AND STAFF

Year	Students	Faculty	Staff
1990-91	8,596	440.0	252.6
1991-92	10,243	512.4	305.4
1992-93	10,775	536.0	330.8
1993-94	11,449	564.1	373.5
1994-95	11,846	671.9	398.8
1995-96	12,431	706.3	433.4
1996-97	13,002	713.5	435.9
1997-98	13,216	703.5	450.3
1998-99	12,220	672.6	462.9
1999-00	13,131	696.6	480.7
2000-01	14,004	737.2	491.9
2001-02	15,351	764.5	503.6
2002-03	16,223	760.0	454.1
2003-04	16,571	796.3	444.6
2004-05	16,520	770.4	497.9
2005-06	15,802	791.8	519.4
2006-07	15,496	815.9	537.7
2007-08	15,322	847.8	552.1
2008-09	16,152	811.1	580.9
2009-10	18,514	827.6	571.4
2010-11	19,179	894.0	592.9
2011-12	18,732	831.7	586.7

SOURCE: Legislative Analyst Information/Actual Reported Data

TABLE 20.

**SALARIED PERSONNEL: POSITION FTES
BY DEPARTMENT/PROGRAM, BY GENDER, AND BY FACULTY/STAFF
ED & GENERAL INDEXES (10000 Fund)
(FILLED POSITIONS AS OF 10/31/12)**

	Full-time Faculty			Full-time Admin/Staff			All Full-time		
	Male	Female	Total	Male	Female	Total	Male	Female	Total
<u>President's Office</u>									
President's Office					3.00	3.00		3.00	3.00
<u>Provost for Academic Affairs</u>									
Provost Office				1.00	1.00	2.00	1.00	1.00	2.00
<u>Assoc. Provost for Education & Community Partnerships</u>									
Assoc. Provost Office				1.00	1.00	2.00	1.00	1.00	2.00
Distance Education				5.00	6.00	11.00	5.00	6.00	11.00
Educational Initiatives				1.00		1.00	1.00		1.00
ePortfolio					1.00	1.00		1.00	1.00
Instructional Media				3.00	1.00	4.00	3.00	1.00	4.00
Tutoring Initiative/Learning Center				1.00	2.75	3.75	1.00	2.75	3.75
University Center					1.00	1.00		1.00	1.00
Academic & Community Services				3.00	3.00	6.00	3.00	3.00	6.00
Scheduling					4.00	4.00		4.00	4.00
Student Success Initiatives					1.00	1.00		1.00	1.00
<u>Asst. Provost for Institutional Effectiveness</u>									
Asst Provost's Office					2.00	2.00		2.00	2.00
Assessment, Accred & Planning				1.00		1.00	1.00		1.00
Center for Innovation & Prof Dvlpmt				1.00	2.00	3.00	1.00	2.00	3.00
Faculty Senate					1.00	1.00		1.00	1.00
Faculty Services & Study Abroad					2.00	2.00		2.00	2.00
Faculty Development Support				0.54		0.54	0.54		0.54
Institutional Research				1.00	4.00	5.00	1.00	4.00	5.00
<u>Learning Resources</u>									
Library/Jordan				1.00	1.00	2.00	1.00	1.00	2.00
Library/South				2.00		2.00	2.00		2.00
Library/Taylorville Redwood				3.00	6.00	9.00	3.00	6.00	9.00
<u>School of Arts, Communication and New Media</u>									
Dean's Office					2.00	2.00		2.00	2.00
Div of Communication & Performing Arts				1.00	1.00	2.00	1.00	1.00	2.00
Communication	5.26	5.00	10.26				5.26	5.00	10.26
Fine Arts	5.00	1.00	6.00				5.00	1.00	6.00
Div of Visual Art & Design				1.00	1.00	2.00	1.00	1.00	2.00
Architectural Technology	3.00		3.00				3.00		3.00
Fashion Institute/Interior Design		1.00	1.00		1.00	1.00		2.00	2.00
Visual Art & Design	8.00	5.00	13.00				8.00	5.00	13.00

	Full-time Faculty			Full-time Admin/Staff			All Full-time		
	Male	Female	Total	Male	Female	Total	Male	Female	Total
School of Business									
Dean's Office				1.00	1.00	2.00	1.00	1.00	2.00
Div of Accounting, Finance & Economics				1.00	1.00	2.00	1.00	1.00	2.00
Accounting	2.00	5.00	7.00		1.00	1.00	2.00	6.00	8.00
Business Economics	3.50	2.00	5.50				3.50	2.00	5.50
Finance & Credit	2.50		2.50				2.50		2.50
Div of Mgmt, Mktg & Culinary Institute				1.00	1.00	2.00	1.00	1.00	2.00
Business Management	7.00	2.00	9.00				7.00	2.00	9.00
Culinary Arts	2.00	1.00	3.00				2.00	1.00	3.00
Marketing	2.00	2.00	4.00				2.00	2.00	4.00
Div of Computer Sci & Info Systems					2.00	2.00		2.00	2.00
Computer Information Systems	6.60	2.00	8.60				6.60	2.00	8.60
Computer Science	4.00	2.00	6.00				4.00	2.00	6.00
Paralegal Studies	2.00	1.00	3.00				2.00	1.00	3.00
School of Health Sciences									
Dean's Office					3.00	3.00		3.00	3.00
Division of Allied Health					2.00	2.00		2.00	2.00
Medical Assistant		4.00	4.00					4.00	4.00
Mortuary Science	1.24		1.24				1.24		1.24
Occupational Therapy Assistant		2.00	2.00					2.00	2.00
Physical Therapist Assistant	1.00	1.00	2.00				1.00	1.00	2.00
Radiologic Technology	1.00	2.00	3.00				1.00	2.00	3.00
Surgical Technology	1.00	0.50	1.50				1.00	0.50	1.50
Dental Hygiene		2.00	2.00		2.00	2.00		4.00	4.00
Division of Nursing					2.27	2.27		2.27	2.27
Nursing *		18.99	18.99		1.00	1.00		19.99	19.99
School of Humanities and Social Sciences									
Dean's Office				1.00	1.00	2.00	1.00	1.00	2.00
Div of Psychology & Sociology				1.00	1.00	2.00	1.00	1.00	2.00
Psychology	2.00	5.00	7.00				2.00	5.00	7.00
Sociology	1.00	2.00	3.00				1.00	2.00	3.00
English *	4.00	16.38	20.38	1.00	1.00	2.00	5.00	17.38	22.38
ESL	2.00	1.00	3.00				2.00	1.00	3.00
Developmental Reading	3.00	4.00	7.00				3.00	4.00	7.00
Developmental Writing	2.00	6.00	8.00	1.00		1.00	3.00	6.00	9.00
Div of Family & Human Studies & Social Wk				1.00	1.00	2.00	1.00	1.00	2.00
Family & Human Studies		2.00	2.00		2.17	2.17		4.17	4.17
Learning Enhancement	3.00	1.00	4.00				3.00	1.00	4.00
Pre Teacher Education		2.00	2.00					2.00	2.00
Social Work	1.00	1.00	2.00				1.00	1.00	2.00
Div of History, Anthropology & Political Sci					2.00	2.00		2.00	2.00
History/Anthropology	5.00	2.00	7.00				5.00	2.00	7.00
Political Science	2.00	1.00	3.00				2.00	1.00	3.00
Dept of Humanities, Lang & Culture				1.00	1.00	2.00	1.00	1.00	2.00
ASL	1.00	1.00	2.00				1.00	1.00	2.00
Humanities	3.00	3.00	6.00				3.00	3.00	6.00
Languages	2.00	3.00	5.00	1.00		1.00	3.00	3.00	6.00

	Full-time Faculty			Full-time Admin/Staff			All Full-time		
	Male	Female	Total	Male	Female	Total	Male	Female	Total
School of Science, Math and Engineering									
Dean's Office				1.00	2.00	3.00	1.00	2.00	3.00
Biology	4.50	8.00	12.50	1.00	4.00	5.00	5.50	12.00	17.50
Biotechnology	1.00	1.00	2.00	4.50	3.00	7.50	5.50	4.00	9.50
Div of Natural Sciences				1.00	1.00	2.00	1.00	1.00	2.00
Chemistry	4.00	1.00	5.00		0.94	0.94	4.00	1.94	5.94
Engineering	5.00	2.00	7.00	1.00		1.00	6.00	2.00	8.00
Engineering Design/Draft Tech	3.00		3.00				3.00		3.00
Geosciences	2.00	1.00	3.00				2.00	1.00	3.00
Physics	2.00	1.00	3.00		0.94	0.94	2.00	1.94	3.94
Surveying	1.00		1.00				1.00		1.00
Health & Lifetime Activities	4.00	5.00	9.00		1.00	1.00	4.00	6.00	10.00
Developmental Math	6.00	6.00	12.00				6.00	6.00	12.00
Math	13.00	7.00	20.00	1.00	1.00	2.00	14.00	8.00	22.00
School of Technical Specialties									
Dean's Office				1.00	1.00	2.00	1.00	1.00	2.00
Div of Technical Specialties				1.00	1.00	2.00	1.00	1.00	2.00
Auto Collision Repair	2.00		2.00				2.00		2.00
Automotive Tech	7.00		7.00				7.00		7.00
Bldg Contr/Construction Mgmt	3.00		3.00	1.00		1.00	4.00		4.00
Diesel Systems Technology	2.00		2.00				2.00		2.00
Welding	1.00		1.00				1.00		1.00
Barbering/Cosmetology	1.00	3.00	4.00		2.00	2.00	1.00	5.00	6.00
Apprenticeship Office					1.00	1.00		1.00	1.00
Apprenticeship/General				1.00		1.00	1.00		1.00
Div of Aviation & Related Tech					2.00	2.00		2.00	2.00
Professional Pilot/Aviation Tech	3.00		3.00				3.00		3.00
Aviation Maintenance	5.00		5.00				5.00		5.00
Non-Destructive Test Technology	1.00		1.00				1.00		1.00
Assoc. Provost for Business Partnerships & Dean of the School of Professional & Econ. Dev.									
Dean's Office					1.00	1.00		1.00	1.00
Financial Services						0.50		0.50	0.50
Miller Conferencing				0.45		0.45	0.45		0.45
Continuing Education						0.63		0.63	0.63
Computer Training Program				0.48		0.48	0.48		0.48
Paralegal Self Support						1.00		1.00	1.00
Business Employer Outreach				0.72		0.72	0.72		0.72
Small Bus Development Regional					1.00	1.00		1.00	1.00
Custom Fit				1.50	2.00	3.50	1.50	2.00	3.50
ATE Operations					1.00	1.00		1.00	1.00
Instit of Public Safety				0.92		0.92	0.92		0.92
Criminal Justice	3.00		3.00				3.00		3.00

	Full-time Faculty			Full-time Admin/Staff			All Full-time		
	Male	Female	Total	Male	Female	Total	Male	Female	Total
<u>Vice President of Business Services</u>									
Vice President's Office			1.00		1.00	2.00	1.00	1.00	2.00
Accounting Systems					2.00	2.00		2.00	2.00
Accounts Payable					6.00	6.00		6.00	6.00
Budget Services			1.00		4.00	5.00	1.00	4.00	5.00
Business Office			2.00		2.00	4.00	2.00	2.00	4.00
Cashiering					5.00	5.00		5.00	5.00
Collections					4.00	4.00		4.00	4.00
EEO Administration					2.00	2.00		2.00	2.00
Emerg Resp/Campus Security			2.00			2.00	2.00		2.00
Human Resources			5.00		9.00	14.00	5.00	9.00	14.00
Inventory					1.00	1.00		1.00	1.00
Payroll					4.00	4.00		4.00	4.00
Purchasing					5.00	5.00		5.00	5.00
Risk Management					2.00	2.00		2.00	2.00
<u>Office of Information Technology</u>									
Academic Computing			7.13		2.00	9.13	7.13	2.00	9.13
Administrative Computing Services			8.08		3.00	11.08	8.08	3.00	11.08
Chief Information Officer Office			6.00		1.00	7.00	6.00	1.00	7.00
Desktop Computing			5.00		2.00	7.00	5.00	2.00	7.00
Help Desk			4.00			4.00	4.00		4.00
Network Services			9.53		4.00	13.53	9.53	4.00	13.53
Technical Services			2.00		1.00	3.00	2.00	1.00	3.00
Web Applications			4.00			4.00	4.00		4.00
<u>Facilities Services</u>									
Asst Vice Pres Facilities Services			2.00		1.00	3.00	2.00	1.00	3.00
Arch/Proj Services			5.00		1.00	6.00	5.00	1.00	6.00
Cabinetmakers			2.00			2.00	2.00		2.00
Carpenters			9.00		0.33	9.33	9.00	0.33	9.33
Custodial Services			35.00		13.00	48.00	35.00	13.00	48.00
Distribution			3.00			3.00	3.00		3.00
Electricians			4.00		0.34	4.34	4.00	0.34	4.34
Environmental Health & Safety			1.00			1.00	1.00		1.00
Facilities Support			3.00			3.00	3.00		3.00
Grounds Maintenance			10.00			10.00	10.00		10.00
HVAC Systems			20.00		0.33	20.33	20.00	0.33	20.33
Interior Design					1.00	1.00		1.00	1.00
Key Office			1.50		0.50	2.00	1.50	0.50	2.00
Mail Services					2.00	2.00		2.00	2.00
Moving Services			7.00			7.00	7.00		7.00
Operation & Maintenance/Miller			1.41			1.41	1.41		1.41
Painters			5.00			5.00	5.00		5.00
Plumbers			4.00			4.00	4.00		4.00
PM System			2.00			2.00	2.00		2.00
Signage			1.50			1.50	1.50		1.50
Space Inv/Energy					0.50	0.50		0.50	0.50
Vehicle Maintenance			1.00		1.00	2.00	1.00	1.00	2.00
<u>Vice President of Institutional Advancement</u>									
Vice President's Office					2.00	2.00		2.00	2.00
Institutional Marketing			6.00		9.40	15.40	6.00	9.40	15.40
Contact Center/Switchboard			1.00		6.00	7.00	1.00	6.00	7.00
Development Office			2.00		4.44	6.44	2.00	4.44	6.44
Events Coordinator					0.64	0.64		0.64	0.64
Media Operations			4.00			4.00	4.00		4.00
<u>Vice President for Government & Community Relations</u>									
Vice President's Office					1.00	1.00		1.00	1.00
Grants Office					1.00	1.00		1.00	1.00
Internal Audit			3.00			3.00	3.00		3.00

	Full-time Faculty			Full-time Admin/Staff			All Full-time		
	Male	Female	Total	Male	Female	Total	Male	Female	Total
<u>Vice President of Student Services</u>									
Vice President's Office				2.25	2.25	2.25	2.25	2.25	2.25
Athletics				1.00	1.00	1.00	1.00	1.00	1.00
Grand Theatre				2.00	2.00	2.00	2.00	2.00	2.00
Asst Vice Pres of Student Plan & Support					2.00	2.00		2.00	2.00
Academic Advising				6.00	21.00	27.00	6.00	21.00	27.00
Academic Advising/Formal					3.00	3.00		3.00	3.00
Degree Works					1.00	1.00		1.00	1.00
Disability Resource Center				3.14	8.59	11.73	3.14	8.59	11.73
Hearing Impaired				0.36		0.36	0.36		0.36
Orientation					1.00	1.00		1.00	1.00
Prospective Students					5.75	5.75		5.75	5.75
Cooperative Education				2.00	3.75	5.75	2.00	3.75	5.75
Student Placement					1.00	1.00		1.00	1.00
Asst Vice Pres of Student Enrollment Services				1.00	1.00	2.00	1.00	1.00	2.00
Data Center					2.00	2.00		2.00	2.00
Enrollment Services					4.00	4.00		4.00	4.00
Financial Aid				3.00	17.00	20.00	3.00	17.00	20.00
International Students				1.30	1.47	2.77	1.30	1.47	2.77
Registration				3.00	9.00	12.00	3.00	9.00	12.00
Student Services - North					2.00	2.00		2.00	2.00
Student Services - South					3.00	3.00		3.00	3.00
Testing Services				2.00	4.00	6.00	2.00	4.00	6.00
Veterans Services					2.00	2.00		2.00	2.00
Asst Vice Pres of Student Life & Dean of Students				1.53	1.00	2.53	1.53	1.00	2.53
Health & Wellness					1.89	1.89		1.89	1.89
Multi-Cultural					2.00	2.00		2.00	2.00
Community Service				0.57	2.35	2.92	0.57	2.35	2.92
Student Involvement Center					0.25	0.25		0.25	0.25

COLLEGE WIDE SUMMARY									
	Full-time Faculty			Full-time Admin/Staff			All Full-time		
	Male	Female	Total	Male	Female	Total	Male	Female	Total
Totals	161.60	144.87	306.47	270.16	309.98	580.14	431.76	454.84	886.60

Prepared by: Arlene Asay, Budget Office
 *Reduced FTE due to sabbatical leave

TABLE 21.

**SALARIED PERSONNEL: POSITION FTE'S
BY DEPARTMENT/PROGRAM, BY GENDER, AND BY FACULTY/STAFF
SERVICE ENTERPRISES, AUXILIARY, DESIGNATED, RESTRICTED
& DIVISION OF APPLIED TECHNOLOGY INDEXES
(FILLED POSITIONS AS OF 10/31/12)**

	Full-time Faculty			Full-time Admin/Staff			All Full-time		
	Male	Female	Total	Male	Female	Total	Male	Female	Total
<u>Assoc. Provost for Education & Community Partnerships</u>									
Concurrent Enrollment				4.00	6.00	10.00	4.00	6.00	10.00
Online Course Fees/Testing Ctr					1.00	1.00		1.00	1.00
UBEST Project				1.00		1.00	1.00		1.00
Utah WERKS				1.00		1.00	1.00		1.00
<u>Asst. Provost for Institutional Effectiveness</u>									
Curriculum Development				0.46		0.46	0.46		0.46
<u>School of Arts, Communication and New Media</u>									
Digital Arts	2.00		2.00	1.00	1.00	2.00	3.00	1.00	4.00
Fine Arts		1.00	1.00					1.00	1.00
Media Council					1.00	1.00		1.00	1.00
<u>School of Business</u>									
Capitol Dining				2.00	1.00	3.00	2.00	1.00	3.00
<u>School of Health Sciences</u>									
Nursing Partnerships	1.00	2.00	3.00		0.73	0.73	1.00	2.73	3.73
Surgical Technology		0.50	0.50					0.50	0.50
<u>School of Humanities and Social Sciences</u>									
Eccles Lab School					0.71	0.71		0.71	0.71
Humanities		1.00	1.00					1.00	1.00
<u>School of Science, Math and Engineering</u>									
Biology	0.50		0.50				0.50		0.50
Biotechnology				0.50	1.00	1.50	0.50	1.00	1.50
Math		1.00	1.00					1.00	1.00
NISGTC TAACCT					1.00	1.00		1.00	1.00
Rocky Mtn Solar Training				1.00		1.00	1.00		1.00
<u>School of Technical Specialties</u>									
NDT Training	1.00		1.00				1.00		1.00
<u>Division of Applied Technology</u>									
Grants/Fees				2.50	0.50	3.00	2.50	0.50	3.00
State Appropriated	12.00	11.00	23.00	12.74	18.75	31.49	24.74	29.75	54.49
<u>Assoc. Provost for Business Partnerships & Dean of the School of Professional & Econ. Dev.</u>									
Assoc Provost Self Support				1.00	1.00	2.00	1.00	1.00	2.00
Accelerated Business Degree					0.50	0.50		0.50	0.50
ACCE/AC Marketing					1.00	1.00		1.00	1.00
ACT Testing Center				0.40		0.40	0.40		0.40
Autocad Non Credit				0.40		0.40	0.40		0.40

	Full-time Faculty			Full-time Admin/Staff			All Full-time		
	Male	Female	Total	Male	Female	Total	Male	Female	Total
Assoc. Provost for Business Partnerships & Dean of the School of Profess. & Econ. Dev. (-cont-)									
Business & Industry Training					1.00	1.00		1.00	1.00
Business Employer Outreach Ed				0.28	1.00	1.28	0.28	1.00	1.28
CE Admin. Self Support					1.37	1.37		1.37	1.37
Composite Training Program				0.50		0.50	0.50		0.50
Computer Training Program				0.52		0.52	0.52		0.52
Corporate Training & Testing				0.50		0.50	0.50		0.50
Energy Sector & Smart Grid				5.20	2.00	7.20	5.20	2.00	7.20
Encore Institute					1.00	1.00		1.00	1.00
Energy Management					0.50	0.50		0.50	0.50
Fiscal Services Self Support					1.00	1.00		1.00	1.00
Ford Grant				1.00		1.00	1.00		1.00
Goldman Sachs				2.00	1.00	3.00	2.00	1.00	3.00
MBIC					1.00	1.00		1.00	1.00
Miller Business Innovation				1.00		1.00	1.00		1.00
Miller Conferencing/Events				2.55		3.55	2.55		3.55
Miller Financial Services					3.50	3.50		3.50	3.50
Program & Course Development					5.00	5.00		5.00	5.00
Public Safety/Homeland Security	1.00		1.00	0.08	1.00	1.08	1.08	1.00	2.08
Small Business Regional				1.00		1.00	1.00		1.00
Small Business State				2.00		2.00	2.00		2.00
STIT					1.00	1.00		1.00	1.00
Women Business Institute					1.00	1.00		1.00	1.00

Vice President of Business Services

Accounting Systems				1.00		1.00	1.00		1.00
Auxiliary Custodians				4.00	3.00	7.00	4.00	3.00	7.00
Accounts Receivable				1.00	3.00	4.00	1.00	3.00	4.00
Cashiering				2.00	6.00	8.00	2.00	6.00	8.00
Parking Services/Public Safety				6.00	3.00	9.00	6.00	3.00	9.00
SC Computer Lab Aides				2.50		2.50	2.50		2.50

Vice President of Governance & Comm. Rela.

Vice President's Office				1.00		1.00	1.00		1.00
Grants Administration				1.00	3.36	4.36	1.00	3.36	4.36

Vice President of Student Services

Vice President's Office					0.75	0.75		0.75	0.75
Academic & Career Advising					1.00	1.00		1.00	1.00
Athletics				4.00	7.17	11.17	4.00	7.17	11.17
Child Care Center					1.00	1.00		1.00	1.00
College Store				2.00	9.00	11.00	2.00	9.00	11.00
Community Service				0.43	2.65	3.08	0.43	2.65	3.08
Disability Resources					1.16	1.16		1.16	1.16
Financial Aid				1.00	2.00	3.00	1.00	2.00	3.00
Food Services				3.00	3.00	6.00	3.00	3.00	6.00
Grand Theatre				1.00	1.00	2.00	1.00	1.00	2.00
Health & Wellness				2.00	6.12	8.12	2.00	6.12	8.12
ID Center				1.00	1.00	2.00	1.00	1.00	2.00
International Students				0.70	0.53	1.23	0.70	0.53	1.23
Multi Cultural Affairs				1.00		1.00	1.00		1.00
Printing Services				2.00	1.00	3.00	2.00	1.00	3.00
Prospective Students/Outreach				2.00	1.00	3.00	2.00	1.00	3.00
Student Center/Taylorsville Redwood				2.59	7.00	9.59	2.59	7.00	9.59
Student Center/South				1.00	1.00	2.00	1.00	1.00	2.00
Student Life & Leadership				3.00	4.75	7.75	3.00	4.75	7.75
Student Services - Offsite					2.00	2.00		2.00	2.00
Student Support Services/TRIO				1.00	4.00	5.00	1.00	4.00	5.00
Veterans Affairs					1.00	1.00		1.00	1.00

COLLEGE WIDE SUMMARY									
	Full-time Faculty			Salaried Admin/Staff			All Full-time		
	Male	Female	Total	Male	Female	Total	Male	Female	Total
Totals	17.50	16.50	34.00	90.84	134.04	224.87	108.34	150.54	258.87

TABLE 22.
FACULTY INFORMATION

TENURE	MALE	FEMALE	TOTAL
Tenured	104	98	202
Tenure Track	50	46	96
Off Tenure	25	18	43
Total	179	162	341

RANKING			
Instructor	58	28	86
Assistant Professor	47	44	91
Associate Professor	45	67	112
Professor	29	23	52
Total	179	162	341

EDUCATIONAL CREDENTIALS			
Less than 2 Years	7	1	8
2 Year Degree	16	8	24
Bachelor Degree	27	15	42
Masters Degree	98	115	213
Doctorate Degree	31	23	54
Total	179	162	341

MALE/FEMALE RATIOS			
Male	179		179
Female		162	162
Total	179	162	341

NOTE: Division of Applied Technology numbers are included
 SOURCE: James Broadbent, HR Manager, Faculty; SLCC HR Department

TAB D. STEP AHEAD

DEGREES AND AWARDS

In 2011-2012, Salt Lake Community College awarded 3,550 Associate Degrees. SLCC had 33.4% of all Associate Degrees in the Utah System of Higher Education. *Community College Week* recognized SLCC as being 3rd in the nation for the number of Associate Degrees awarded out of all two-year community colleges.

Fast Facts Number of Degrees Awarded 2011-2012

- AS = 2,652
- AAS = 752
- AA = 77
- APE = 69
- Certificates = 150
- Diplomas = 23

TABLE 23.

**DISTRIBUTION OF GRADUATES
BY DEGREE AND BY MAJOR**

PROGRAM AREA	2009 - 10						2010 - 11						2011 - 12					
	APE	AA	AS	AAS	CERT	DIP	APE	AA	AS	AAS	CERT	DIP	APE	AA	AS	AAS	CERT	DIP
Accounting				9	10				12	9					16	1		
Apprenticeship (all)				32					47						40			
Architectural Technology			23	10					22	9					17	2		
ASL/Interpreting		12						13						13				
Automotive Collision Repair & Painting				4	1				4						4	2		
Automotive Technician				7					16						14			
Aviation Maintenance Technician				7		1			10		1				16			1
Aviation Technology/Professional Pilot			9						9						13	1		
Barbering/Cosmetology				50	47	36			55	12	23				48	22	21	
Biology			11						9						13			
Biotechnology/Biomanufacturing				4	1				8	5	1				6	7	2	1
Bldg Construction/Construction Mgt (all)				8					9	5					9	2		
Business		36	254					32	226					26	208			
Business Mgt/Log Mgt/Prod Mgt/SBO (all)				4	1				1						9	1		
Chemistry			26						16						12			
Communications (all)			21						18						22			
Computer Info Systems (all)			15	1					13	5					15	9		
Computer Science			23						21						23	3		
Criminal Justice			51	3					70	3					67	3		
Culinary Arts				13						16					21			
Dental Hygiene				32						22					16			
Diesel Systems Technology				5						11					11			
Economics			11						15						13			
Education			19						29						38			
Electrical and Instrumentation Tech				9	6					8	2				2			
Electronics			4	16					2	6								
Energy Management										10					11			
Engineering (all)	42							44					69					
Engineering Design/Drafting Tech			10	8	27				8	2	12				12	14	11	
English		14	16						16	6	1			17	4			
Environmental Technology			5						2						2			
Family & Human Studies			1	1											7			
Fashion Institute					5						4				19	3		
Film Production Tech				6						2					4			
Finance and Credit				4	1					2					4			
Fitness Technician				12						8					11			
General Studies			1769						1805						1968			
Geosciences (all)				2	1					4	3	2			2	2	11	
Health Science				83						93					64			
History		14							21					14				
Humanities		3							7					3				
Interior Design				10						6					22			
International Studies (all)			9						4					3				
Marketing Mgt				5	1					7	1				1			
Mathematics			3							6					7			
Medical Assistant					58						62						64	
Music			3							8					4			
Non-Destructive Testing Tech				9						9					5			
Nursing				284						260					232			
Occupational Therapy Asst				15						15					19			
Paraeducation			2															
Paralegal Studies				38						36					48			
Physical Therapist Asst				23						22					21			
Physics			3							1					3			
Political Science			25							20					18			
Psychology			54							73					54			
Radiologic Technology				41						31					39			
Social Work		4	17						3	25				1	12			
Sociology			46							39					39			
Surgical Technology					61						32						32	
Surveying				13						10					6			
Telecommunications				4														
Visual Art & Design (all)			3	44	1				6	43	2				63	1		
Welding				9		1				9					7			
COLLEGE TOTALS	42	92	2509	741	220	38	44	96	2563	710	140	24	69	77	2652	752	150	23

TABLE 24.

**DISTRIBUTION OF GRADUATES BY DEGREE
BY MAJOR AND BY GENDER**

PROGRAM AREA	MALE						FEMALE						TOTAL					
	2011-12						2011-12						2011-12					
	APE	AA	AS	AAS	CERT	DIP	APE	AA	AS	AAS	CERT	DIP	APE	AA	AS	AAS	CERT	DIP
Accounting				1					15	1					16	1		
Apprenticeship (all)				38					2						40			
Architectural Technology			13	1					4	1					17	2		
ASL/Interpreting		1						12						13				
Automotive Collision Repair & Painting				3	2					1					4	2		
Automotive Technician				14											14			
Aviation Maintenance Technician				16		1									16		1	
Aviation Technology/Professional Pilot			11	1					2						13	1		
Barbering/Cosmetology						1			48	22	20				48	22	21	
Biology			8						5						13			
Biotechnology/Biomanufacturing			4	1					2	6	2	1			6	7	2	1
Bldg Construction/Construction Mgt (all)			9	1						1					9	2		
Business		18	111					8	97					26	208			
Business Mgt/Log Mgt/Prod Mgt/SBO (all)				3						6	1				9	1		
Chemistry			8						4						12			
Communications (all)			11						11						22			
Computer Info Systems (all)			10	6					5	3					15	9		
Computer Science			23	3											23	3		
Criminal Justice			37	2					30	1					67	3		
Culinary Arts				12						9					21			
Dental Hygiene									16						16			
Diesel Systems Technology				11											11			
Economics			12						1						13			
Education			2						36						38			
Electrical and Instrumentation Tech				2											2			
Energy Management				9						2					11			
Engineering (all)	66							3					69					
Engineering Design/Drafting Tech			11	13	10				1	1	1			12	14	11		
English		6	2						11	2				17	4			
Environmental Technology			1						1					2				
Family and Human Studies									7					7				
Fashion Institute				1					18	3				19	3			
Film Production Tech				4										4				
Finance and Credit				1						3				4				
Fitness Technician				2						9				11				
General Studies			927						1041					1968				
Geosciences (all)			1		9				1	2	2			2	2	11		
Health Science			13						51					64				
History		8							6					14				
Humanities		2							1					3				
Interior Design				1						21				22				
International Studies (all)		2							1					3				
Marketing Mgt				1										1				
Mathematics			5						2					7				
Medical Assistant					5						59						64	
Music			2						2					4				
Non-Destructive Testing Tech				5										5				
Nursing				39						193				232				
Occupational Therapy Asst				3						16				19				
Paralegal Studies				7						41				48				
Physical Therapist Asst				3						18				21				
Physics			2						1					3				
Political Science			10						8					18				
Psychology			23						31					54				
Radiologic Technology				12						27				39				
Social Work				4					1	8				1	12			
Sociology			12						27					39				
Surgical Technology					10						22						32	
Surveying				6										6				
Visual Art & Design (all)				26						37	1			63	1			
Welding				7										7				
COLLEGE TOTALS	66	37	1272	255	36	2	3	40	1380	497	114	21	69	77	2652	752	150	23

TAB E. STEP AHEAD

FINANCIAL INFORMATION

Salt Lake Community College strives to keep higher education affordable for the residents of its service area. In a climate of state budget reductions, Salt Lake Community College increased tuition and fees by only 3.9% for 2012-2013.

Salt Lake Community College provides assistance when possible through Federal grants, student loans, and outside scholarships. The amount of Pell Grants awarded to SLCC students increased 2% over 2010-2011.

Fast Facts

- 2012-2013 Full-time Tuition and Fees (per semester) = \$1,585
- 2011-2012 Cost per FTE = \$2,657
- 2011-2012 Estimated Students with Financial Aid = 24,792

TABLE 25.

2012-2013 CURRENT SEMESTER TUITION AND FEE SCHEDULE

CREDIT HOURS	2012-2013 TUITION AND FEE SCHEDULE RESIDENT STUDENTS			2012-2013 TUITION AND FEE SCHEDULE NON-RESIDENT STUDENTS		
	REGULAR TUITION	TOTAL MISC. FEES	TOTAL TUITION & FEES	REGULAR TUITION	TOTAL MISC. FEES	TOTAL TUITION & FEES
1	114.50	52.50	167.00	400.50	52.50	453.00
2	229.50	69.50	299.00	800.50	69.50	870.00
3	344.50	86.50	431.00	1200.50	86.50	1287.00
4	459.50	103.50	563.00	1600.50	103.50	1704.00
5	574.50	120.50	695.00	2000.50	120.50	2121.00
6	689.50	137.50	827.00	2400.50	137.50	2538.00
7	804.50	154.50	959.00	2800.50	154.50	2955.00
8	919.50	171.50	1091.00	3200.50	171.50	3372.00
9	1034.50	188.50	1223.00	3600.50	188.50	3789.00
10	1149.50	205.50	1355.00	4000.50	205.50	4206.00
11	1264.50	205.50	1470.00	4400.50	205.50	4606.00
12	1379.50	205.50	1585.00	4800.50	205.50	5006.00
13	1379.50	205.50	1585.00	4800.50	205.50	5006.00
14	1379.50	205.50	1585.00	4800.50	205.50	5006.00
15	1379.50	205.50	1585.00	4800.50	205.50	5006.00
16	1379.50	205.50	1585.00	4800.50	205.50	5006.00
17	1379.50	205.50	1585.00	4800.50	205.50	5006.00
18	1379.50	205.50	1585.00	4800.50	205.50	5006.00
19	1494.50	205.50	1700.00	5200.50	205.50	5406.00
20	1609.50	205.50	1815.00	5600.50	205.50	5806.00
21	1724.50	205.50	1930.00	6000.50	205.50	6206.00
22	1839.50	205.50	2045.00	6400.50	205.50	6606.00
23	1954.50	205.50	2160.00	6800.50	205.50	7006.00
24	2069.50	205.50	2275.00	7200.50	205.50	7406.00
25	2184.50	205.50	2390.00	7600.50	205.50	7806.00

HISTORICAL TUITION AND FEE RATES

CREDIT HOURS	2005-06 TUITION/ FEES	2006-07 TUITION/ FEES	2007-08 TUITION/ FEES	2008-09 TUITION/ FEES	2009-10 TUITION/ FEES	2010-11 TUITION/ FEES	2011-12 TUITION/ FEES	2012-13 TUITION/ FEES
5								
RESIDENT	556.50	581.25	607.00	634.50	638.00	646.00	671.00	695.00
NON-RES	1658.50	1710.75	1791.00	1881.50	1935.00	1946.00	2036.00	2121.00
10								
RESIDENT	999.00	1038.75	1093.25	1145.75	1203.00	1256.00	1306.00	1355.00
NON-RES	3071.00	3188.25	3367.25	3552.75	3695.00	3856.00	4036.00	4206.00
15								
RESIDENT	1156.00	1201.75	1267.25	1329.75	1395.00	1466.00	1526.00	1585.00
NON-RES	3616.00	3759.25	3977.25	4186.75	4365.00	4586.00	4802.00	5006.00

TABLE 26.

**COST PER STUDENT CREDIT HOUR BY DEPARTMENT (ANNUALIZED FTE)
INSTRUCTIONAL COST**

DEPARTMENT	08-09		09-10		10-11		11-12	
	AFTE	\$/SCH	AFTE	\$/SCH	AFTE	\$/SCH	AFTE	\$/SCH
Accounting	232	119	248	101	283	102	299	99
Apprenticeship (all)	503	76	345	74	271	72	197	102
Architectural Technology	79	186	87	199	84	177	68	199
Architectural Technology (Prison)	34	161						
ASL/Interpreting	89	160	112	128	84	137	69	168
Automotive Collision Repair & Painting	23	238	29	204	26	221	33	200
Automotive Technician	66	308	111	226	115	211	113	259
Automotive Technician (Prison)	33	205						
Aviation Technology/Aviation Maintenance Tech	66	287	91	245	129	217	152	163
Aviation Technology/Professional Pilot	43	192	57	178	74	151	71	153
Barbering/Cosmetology	422	158	309	153	287	170	265	198
Biology	984	65	1225	58	1231	61	1158	64
Biotechnology	18	1309 *	23	1234 *	26	1056 *	29	976 *
Bldg Construction/Construction Mgt	61	216	58	292	65	230	62	257
Bldg Construction (Prison)	80	308						
Business Economics	286	65	307	59	354	59	309	72
Business Management	400	96	409	92	436	80	380	96
Chemistry	541	54	597	58	591	64	532	69
Communication	625	74	732	62	829	66	804	63
Computer Info Systems	635	85	714	69	780	62	751	66
Computer Science	101	336	135	228	161	112	185	110
Criminal Justice	229	54	324	51	390	65	394	65
Culinary Arts			115	144	143	167	118	175
Culinary Arts (Prison)	48	135						
Dental Hygiene	47	367	50	431	34	553	26	770
Developmental Education	1656	83	2119	72	2079	78	2098	82
Diesel Systems Technology	15	545	30	278	43	362	44	203
Education	81	60	119	47	144	45	142	60
Electronics (Prison)	31	209						
Electronics & Instrumentation Tech	56	324	29	127	10	192 **		
Engineering	108	306	129	275	164	227	193	218
Engineering Design/Drafting Tech	51	272	67	287	69	221	73	201
Engineering Design/Drafting Tech (Prison)	4	287						
English	1018	88	1331	73	1125	83	1197	83
English Second Language	96	80	97	91	88	83	94	73
Environmental Technology	23	261	21	20	15	71 **		
Family & Human Studies	205	79	232	72	268	69	199	81
Fashion Institute	61	65	91	68	106	65	120	64
Finance and Credit	149	90	153	88	168	78	170	81
Fine Arts	564	72	653	60	779	61	766	58
Geosciences	214	66	259	66	289	61	289	59
Health & Lifetime Activities	675	83	782	73	903	74	897	66
History/Anthropology	578	63	647	58	714	52	703	56
Humanities	515	53	572	50	607	50	623	51
Interior Design	59	87	61	64	79	65	79	71
Languages	246	98	269	81	278	88	267	95
Marketing	63	246	89	174	109	147	101	150
Mathematics	1485	54	1775	48	1740	52	1746	54
Medical Assistant	117	119	177	89	182	111	143	144
Medical Lab Technology	1	N/A						
Mortuary Science							5	1310 ***
Non-Destructive Testing Tech	17	252	23	205	20	177	18	232
Nursing	229	259	233	313	237	258	235	277
Occupational Therapy Asst	39	186	38	197	41	184	48	176
Paralegal Studies	97	128	121	98	134	107	134	109
Physical Therapist Asst	53	216	59	202	57	217	52	222
Physics	276	59	317	52	316	57	292	59
Political Science	165	63	173	60	195	54	183	69
Psychology	522	64	641	55	636	57	623	60
Radiologic Technology	78	134	77	155	76	150	70	161
Short-Term Intensive Training	22	345	22	643	17	392	10	757
Social Work	71	72	81	52	102	51	100	52
Sociology	258	67	284	59	310	54	287	63
Surgical Technology	19	235	19	233	19	238	23	209
Surveying	31	141	26	168	24	196	24	177
Visual Art & Design	501	126	540	128	564	135	580	126
Visual Art & Design (Prison)	10	70						
Welding	48	229	80	156	79	171	89	163
INSTRUCTIONAL TOTALS	16152	97	18514	85	19179	85	18732	89

NOTE: * Biotechnology includes partnership funding.

** Program discontinued

*** Start up costs

TABLE 27.

COST PER FULL-TIME EQUIVALENT (FTE) BY DEPARTMENT (ANNUALIZED FTE)

DEPARTMENT	08-09		09-10		10-11		11-12	
	AFTE	\$/FTE	AFTE	\$/FTE	AFTE	\$/FTE	AFTE	\$/FTE
Accounting	232	3564	248	3028	283	3054	299	2966
Apprenticeship (all)	503	2290	345	2223	271	2160	197	3058
Architectural Technology	79	5591	87	5963	84	5297	68	5984
Architectural Technology (Prison)	34	4837						
ASL/Interpreting	89	4806	112	3843	84	4112	69	5046
Automotive Collision Repair & Painting	23	7153	29	6115	26	6615	33	5988
Automotive Technician	66	9254	111	6777	115	6325	113	7756
Automotive Technician (Prison)	33	6157						
Aviation Technology/AviationMaintenance Tech	66	8605	91	7342	129	6507	152	4902
Aviation Technology/Professional Pilot	43	5755	57	5326	74	4533	71	4590
Barbering/Cosmetology	422	4741	309	4591	287	5091	265	5941
Biology	984	1952	1225	1732	1231	1838	1158	1927
Biotechnology	18	39281 *	23	37008 *	26	31676 *	29	29267 *
Bldg Construction/Construction Mgt	61	6470	58	8757	65	6893	62	7706
Bldg Construction (Prison)	80	9241						
Business Economics	286	1942	307	1781	354	1779	309	2149
Business Management	400	2866	409	2745	436	2407	380	2893
Chemistry	541	1624	597	1746	591	1927	532	2055
Communication	625	2211	732	1857	829	1968	804	1903
Computer Info Systems	635	2560	714	2064	780	1856	751	1989
Computer Science	101	10086	135	6849	161	3373	185	3300
Criminal Justice	229	1619	324	1515	390	1959	394	1943
Culinary Arts			115	4318	143	5019	118	5251
Culinary Arts (Prison)	48	4056						
Dental Hygiene	47	11014	50	12920	34	16577	26	23087
Developmental Education	1656	2504	2119	2172	2079	2350	2098	2468
Diesel Systems Technology	15	16348	30	8326	43	10863	44	6095
Education	81	1786	119	1400	144	1357	142	1790
Electronics (Prison)	31	6279						
Electronics & Instrumentation Tech	56	9727	29	3796	10	5769 **		
Engineering	108	9187	129	8255	164	6805	193	6539
Engineering Design/Drafting Tech	51	8165	67	8606	69	6629	73	6024
Engineering Design/Drafting Tech (Prison)	4	8603						
English	1018	2640	1331	2186	1125	2488	1197	2482
English Second Language	96	2402	97	2716	88	2477	94	2189
Environmental Technology	23	7819	21	596	15	2126 **		
Family & Human Studies	205	2361	232	2147	268	2066	199	2444
Fashion Institute	61	1941	91	2041	106	1945	120	1911
Finance and Credit	149	2696	153	2628	168	2354	170	2444
Fine Arts	564	2154	653	1791	779	1817	766	1727
Geosciences	214	1974	259	1987	289	1825	289	1782
Health & Lifetime Activities	675	2499	782	2203	903	2220	897	1971
History/Anthropology	578	1896	647	1750	714	1557	703	1682
Humanities	515	1597	572	1506	607	1496	623	1521
Interior Design	59	2621	61	1909	79	1955	79	2115
Languages	246	2931	269	2435	278	2634	267	2847
Marketing	63	7383	89	5233	109	4403	101	4493
Mathematics	1485	1614	1775	1436	1740	1568	1746	1626
Medical Assistant	117	3569	177	2664	182	3334	143	4317
Medical Lab Technology	1	N/A						
Mortuary Science							5	39315 ***
Non-Destructive Testing Tech	17	7553	23	6163	20	5323	18	6959
Nursing	229	7774	233	9395	237	7749	235	8308
Occupational Therapy Asst	39	5594	38	5911	41	5513	48	5293
Paralegal Studies	97	3829	121	2932	134	3221	134	3259
Physical Therapist Asst	53	6491	59	6056	57	6514	52	6670
Physics	276	1785	317	1568	316	1703	292	1764
Political Science	165	1878	173	1803	195	1613	183	2085
Psychology	522	1908	641	1664	636	1715	623	1790
Radiologic Technology	78	4027	77	4658	76	4508	70	4835
Short-Term Intensive Training	22	10346	22	19287	17	11771	10	22703
Social Work	71	2158	81	1545	102	1532	100	1569
Sociology	258	2010	284	1775	310	1619	287	1883
Surgical Technology	19	7055	19	6976	19	7127	23	6284
Surveying	31	4222	26	5042	24	5870	24	5317
Visual Art & Design	501	3792	540	3852	564	4037	580	3767
Visual Art & Design (Prison)	10	2087						
Welding	48	6872	80	4680	79	5139	89	4883
INSTRUCTIONAL TOTALS	16152	2900	18514	2558	19179	2552	18732	2657

NOTE: \$'s/FTE reflect actual costs

* Biotechnology includes partnership funding.

** Program discontinued

*** Start up costs

TABLE 28.**COSTS PER FTE (Full-Time Equivalent) STUDENT AT SLCC
(Current and Adjusted for Inflation)**

Academic Year	Cost Per Student	Inflation Rate (CPI)	Adjusted Cost Per Student
1990-91	3545.00	130.70	2712.32
1991-92	3693.00	136.20	2711.45
1992-93	3959.00	140.30	2821.81
1993-94	4016.00	144.50	2779.24
1994-95	4319.00	148.20	2914.30
1995-96	4478.00	152.40	2938.32
1996-97	4432.00	156.90	2824.73
1997-98	4367.00	160.50	2720.87
1998-99	4856.00	163.00	2979.14
1999-00	4788.00	166.60	2873.95
2000-01	4887.00	172.20	2837.98
2001-02	4913.00	177.10	2774.14
2002-03	4550.00	179.90	2529.18
2003-04	4641.00	184.00	2522.28
2004-05	4881.00	188.90	2583.91
2005-06	5412.00	195.30	2771.12
2006-07	5886.00	201.60	2919.64
2007-08	6569.00	207.30	3168.84
2008-09	6751.00	215.30	3135.62
2009-10	5790.00	214.50	2699.30
2010-11	5839.00	218.10	2677.21
2011-12	5912.00	224.90	2628.72

SOURCE: 1990-91 to 2011-12, Reported E & G Actuals
(Includes tuition waivers and excludes transfers)

United States Consumer Price Index (CPI),
1982-1984 = 100

TABLE 29.**DEPARTMENT OF FINANCIAL AID**

TYPES OF FINANCIAL ASSISTANCE	2001-2002	2011-2012	% INCREASE/ DECREASE
* Pell Grant	\$8,663,733	\$42,317,307	388.44%
* Supplemental Educational Opportunity Grant	\$317,978	\$532,942	67.60%
* Federal Work Study	\$293,616	\$393,290	33.95%
* Perkins Student Loans	\$884,163	\$562,385	-36.39%
* Stafford Direct Loan Program	\$4,759,111	\$36,440,624	665.70%

Estimate: 24,792 students received some form of Aid in 2011-2012.

In 2011-2012, approximately 171,827 student contacts were made through the Financial Aid Department.

In 2011-2012, \$1,857,144 student tuition waivers were granted.

In 2011-2012, \$966,392 outside scholarships were disbursed.

In 2011-2012, \$1,444,730 State Aid was disbursed.

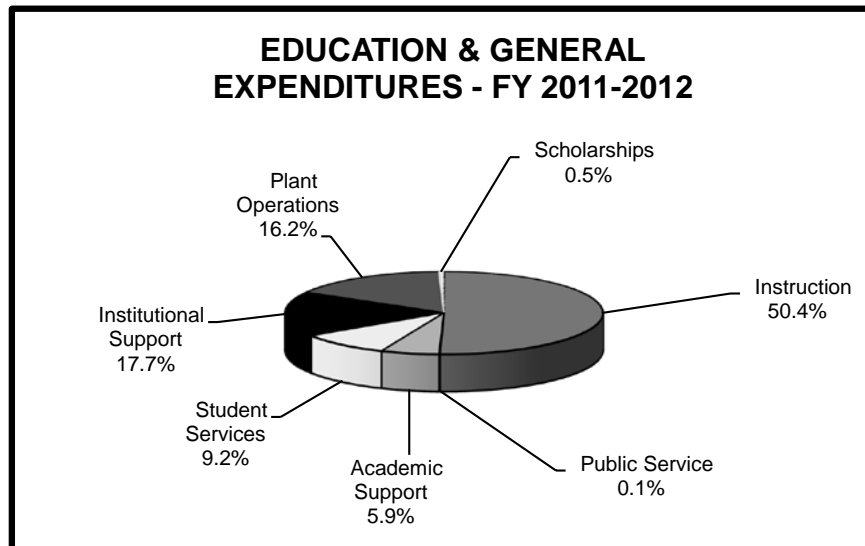
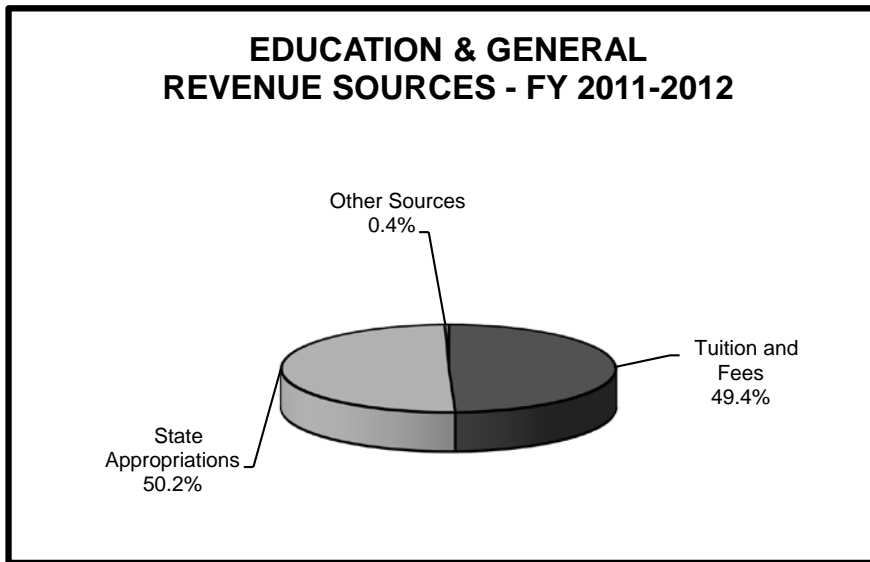
SOURCE: Cristi Millard, Director, Financial Aid

TABLE/GRAPH 30.

**2011-2012 EDUCATION AND GENERAL
REVENUE SOURCES AND EXPENDITURES**

REVENUE SOURCES	
Tuition and Fees	\$ 55,832,394
State Appropriations	56,805,491
Other Sources	415,920
TOTAL	\$ 113,053,805

EXPENDITURES	
Instruction	\$ 54,184,954
Public Service	140,343
Academic Support	6,300,954
Student Services	9,836,612
Institutional Support	18,978,450
Plant Operations	17,438,437
Scholarships	580,252
TOTAL	\$ 107,460,002

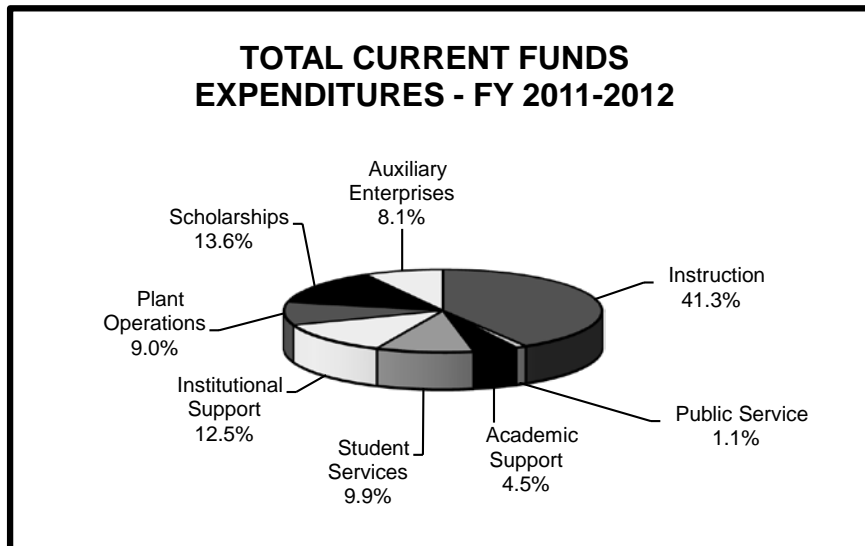
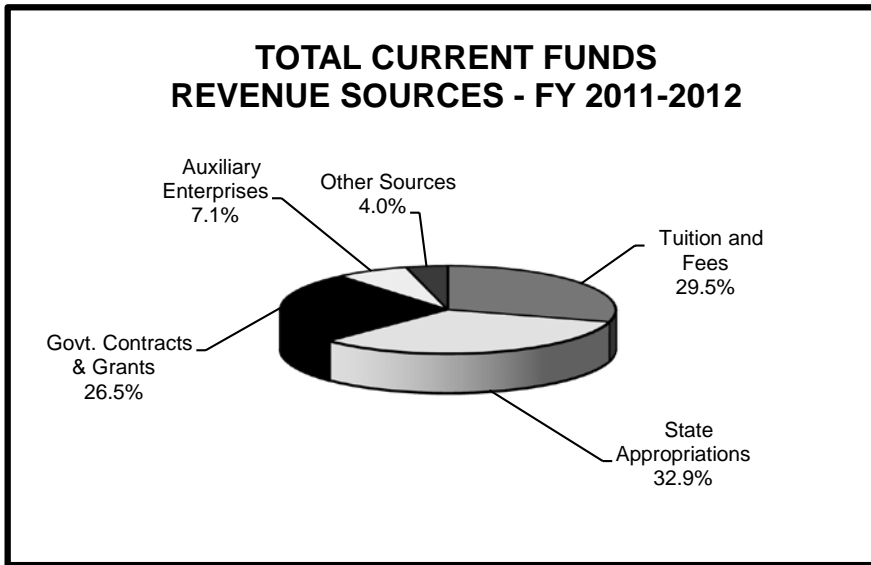


TABLE/GRAPH 31.

**2011-2012 TOTAL CURRENT FUNDS
REVENUE SOURCES AND EXPENDITURES**

REVENUE SOURCES	
Tuition and Fees	\$ 57,926,892
State Appropriations	64,714,457
Govt. Contracts & Grants	52,063,334
Auxiliary Enterprises	13,910,413
Other Sources	7,944,660
TOTAL	\$ 196,559,756

EXPENDITURES	
Instruction	\$ 78,699,619
Public Service	2,163,217
Academic Support	8,600,076
Student Services	18,929,232
Institutional Support	23,726,459
Plant Operations	17,141,852
Scholarships	25,846,102
Auxiliary Enterprises	15,457,302
TOTAL	\$ 190,563,859



TAB F. STEP AHEAD

FACILITIES

Salt Lake Community College facilities have been modified to meet the needs of growth and a changing community. A new classroom and administrative building is under construction; when complete, it will replace the current Nelson Administration Building on the Taylorsville Redwood Campus. The College opened the Westpointe Center, which will serve the Northwest part of the Salt Lake valley.

Fast Facts

- Taylorsville Redwood Campus -
Total Square Footage = 1,072,196
- South City Campus -
Total Square Footage = 387,144
- Miller Campus -
Total Square Footage = 330,882
- Jordan Campus -
Total Square Footage = 267,120
- Meadowbrook Campus -
Total Square Footage = 72,383
- Leased Properties -
Total Square Footage = 138,316

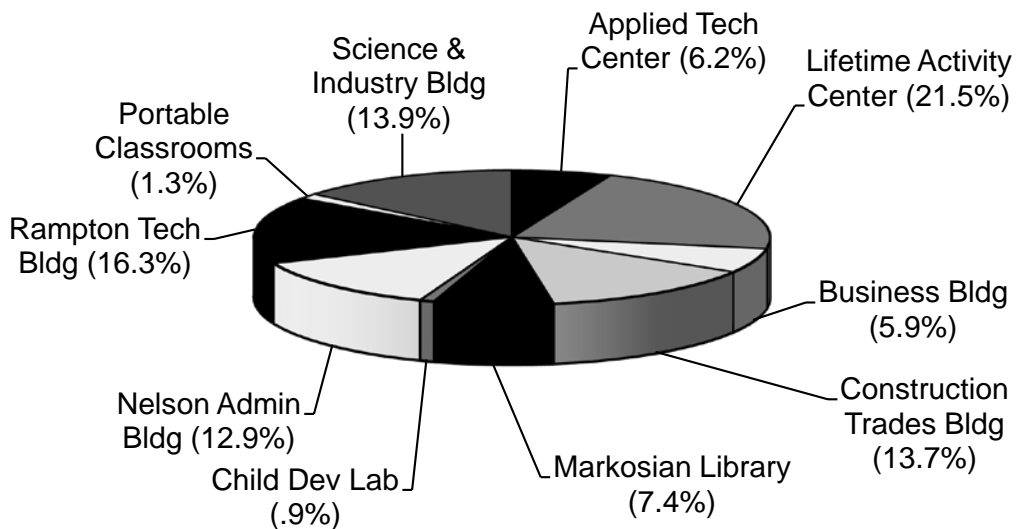
TABLE/GRAPH 32.

BUILDING PROFILE

**INSTRUCTIONAL BUILDINGS - TAYLORSVILLE REDWOOD CAMPUS
BASED ON GROSS SQUARE FEET**

BUILDING	GROSS SQ. FEET
Lifetime Activity Center	179,637
Rampton Technology Bldg	135,562
Science & Industry Bldg	116,000
Construction Trades Bldg	114,658
Nelson Administration Bldg	106,817
Markosian Library	62,000
Applied Technology Center	51,905
Business Building	49,500
Portable Classrooms (5-12)	10,678
Child Development Lab	7,510
TOTAL	834,267

**BUILDING PROFILE
INSTRUCTIONAL BUILDINGS (GROSS SQUARE FEET)**

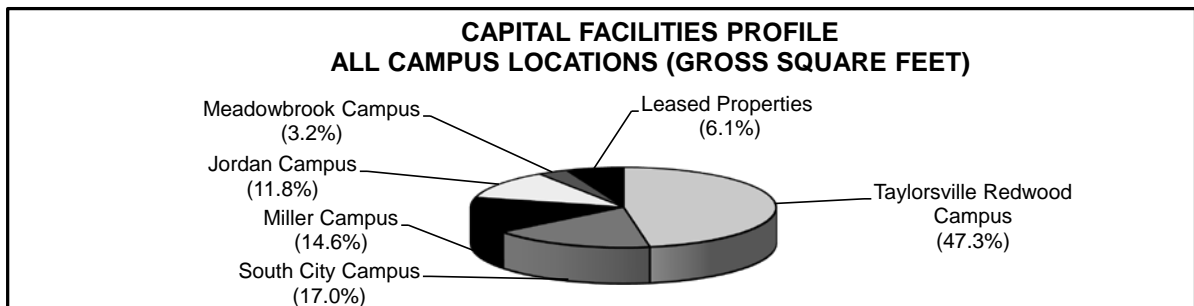


TABLE/GRAPH 33.

CAPITAL FACILITIES PROFILE ALL CAMPUS LOCATIONS BASED ON GROSS SQUARE FEET

BUILDING	GROSS SQ. FEET	BUILDING	GROSS SQ. FEET
TAYLORSVILLE REDWOOD CAMPUS		SOUTH CITY CAMPUS	
Lifetime Activity Center	179,637	Main Building	340,185
Student Center	166,088	Shop Building	24,762
Rampton Technology Bldg	135,562	South City Annex	20,867
Science & Industry Bldg	116,000	Portable Office	1,330
Construction Trades Bldg	114,658	TOTAL	387,144
Nelson Administration Bldg	106,817		
Markosian Library	62,000	LEASED PROPERTIES	
Applied Technology Center	51,905	Westpointe Center	35,700
Business Building	49,500	Highland Center	31,554
Gundersen Facilities Services Building	16,800	South City Utility Storage Unit	30,000
Facilities Complex 048	13,600	Library Square Center	21,194
Facilities Complex 049	9,000	International Aerospace Aviation Education Center	15,563
Institutional Residence	8,343	Airport Hangers (3)	2,760
Portable Classrooms (8-12)	7,840	Community Writing Center	1,545
Heating Plant	7,580	TOTAL	138,316
Child Development Lab	7,510		
Physical Plant Storage	3,593	MEADOWBROOK CAMPUS	
Portable Offices (1-3)	3,032	Building A	26,954
Portable Classrooms (5-7)	2,838	Building C	25,844
Facilities Complex 052	2,000	Building B	17,608
Alder Amphitheater	1,607	MBC Portable #1 Flight Simulation	1,008
Professional Lab	1,456	MBC Portable #2 Flight Program	969
Facilities Complex 056	1,200	TOTAL	72,383
Facilities Complex 057	1,200		
Athletic Restrooms	750		
Softball Storage (1-3)	520		
Concession/Scorebooth	350		
Tennis Court Storage	268		
Irrigation Pump Building	240		
ATC Hazardous Storage Building	162		
STC Kiosk	100		
STC Ticket Booth	40		
TOTAL	1,072,196		
MILLER CAMPUS		JORDAN CAMPUS	
Larry & Gail Miller Public Safety Ed. & Training Cntr.	73,221	Jordan Health Science	151,000
Auto Training Center	48,820	Jordan High Tech Center	89,819
Miller Free Enterprise Center	48,650	Student Pavilion	14,055
Corporate Partnership Center	43,750	Jordan Distribution Center (Includes Tunnel)	11,270
Miller Professional Development Center - Karen Gail Miller Conference Center	37,935	Ballfield Out Buildings (5)	826
Miller DPS Dormitory	36,870	Pump House	150
Miller Culinary Institute	24,480	TOTAL	267,120
Miller DPS Firing Range	16,166		
Shop Storage Building	990		
TOTAL	330,882		

SOURCE: Kathy Shipley, Access & Resource Manager



TAB G. STEP AHEAD

STUDENT INPUT

Salt Lake Community College surveys new students, non-returning students, and graduating students each year to better understand the needs and experiences of those attending SLCC. There is no single or typical student at SLCC. Students vary tremendously in age, in their work and family situations, and even in the reasons they attend the College.

These three surveys provide valuable data that provides important insights into SLCC's dynamic student population. As valuable as these statistics are, though, they only tell part of the story—the student population that completed these surveys possesses more diversity than statistics can describe.

Students list their primary objective in attending SLCC as transferring to a four-year institution. Students list financial demands as their greatest difficulty. Most SLCC students work at least part-time; the majority take less than a full load of college classes.

Fast Facts

- 49% of New Students reported an objective of earning a degree and then transferring
- 43% of Non-returning Students intend to re-enroll within a year
- 90% of SLCC Graduates were satisfied or very satisfied with their experience at SLCC

EXPLANATION OF THE STUDENT FOLLOW-UP SYSTEMS

On a yearly basis Salt Lake Community College (SLCC) conducts anonymous student surveys asking certain kinds of information about the College. Three surveys are conducted annually.

- The **NEW STUDENT SURVEY** is sent to students enrolled Fall Semester who have not previously attended SLCC.
- The **NON-RETURNING STUDENT SURVEY** is sent to those students who attended SLCC during Fall Semester but who were not enrolled Spring Semester.
- The **GRADUATING STUDENT SURVEY** is mailed to students who graduate during the school year.

Data from each survey is entered into a statistical software package, analyzed, and the resulting information is published here. The results that are included present each question that was asked of each of the respondents followed by the resulting percentages.

If you have any questions concerning any facet of the Student Follow-Up system, please contact the Office of Institutional Research at Salt Lake Community College.

TABLE 34.**2011-2012 NEW STUDENT SURVEY SUMMARY****SATISFACTION RESPONSE PERCENTAGES FOR SELECTED
SLCC PROGRAMS AND SERVICES
(Percentages are of those using the service.)**

ALL NEW FALL SEMESTER STUDENTS - 970 Responses

	Very Satisfied	Satisfied	Neutral	Dis-satisfied	Very dis-satisfied
Overall SLCC Experience	30%	57%	10%	2%	1%
Academic Advising	28%	40%	21%	8%	3%
Career Information	20%	38%	35%	5%	2%
Financial Aid	38%	32%	20%	7%	3%
Registration	33%	46%	15%	4%	2%
Student Express	27%	40%	29%	2%	2%
Appearance of Buildings/Classrooms	37%	42%	18%	2%	1%
Availability of Desired Classes	11%	40%	28%	18%	3%
Instructor's Use of Class Time	28%	51%	16%	4%	1%
Class Sizes	28%	55%	15%	1%	1%
Quality of Instruction	26%	53%	17%	2%	2%
Friendliness of Faculty/Response to Need	31%	49%	15%	3%	2%

TABLE 34.

2011-2012 NEW STUDENT SURVEY SUMMARY (Continued)

Primary educational objective in attending?

49%	Earn degree and transfer
23%	Earn degree and work in that field
13%	Take courses/transfer before degree
4%	Take some courses and get a new job
2%	Upgrade skills in present job
9%	Other

Total semesters (including the one) planning to attend SLCC?

5%	1
7%	2
6%	3
17%	4
9%	5
8%	6
2%	7
11%	8 and above
30%	Haven't decided
5%	No Response

What is your current credit hour enrollment?

18%	1 – 5
40%	6 – 11
31%	12 – 14
10%	15+
1%	No Response

What is your highest degree earned?

2%	Less than HS Diploma
73%	HS Diploma/GED
8%	One-year Certificate of Completion
6%	AS/AAS/APE/AA
8%	BS/BA
2%	Graduate+
1%	No Response

Current status at SLCC?

48%	First time college student
16%	Earned college credits through Concurrent, AP, etc.
36%	Previously attended another college
10%	Previously attended SLCC

What is your ethnic origin?

1%	American Indian/Alaskan Native
4%	Asian/Pacific Islander
1%	Black/Non-Hispanic
9%	Hispanic
80%	White/Non-Hispanic
3%	Other
2%	No Response

How many hours a week were you employed while also attending college?

28%	None
14%	1 – 19 hours
28%	20 – 39 hours
17%	40 hours
10%	41+
3%	No Response

What is your age group?

40%	18 – 21
19%	22 – 26
19%	27 – 35
14%	36 – 50
5%	Over 50
3%	No Response

Are you?

35%	Male
64%	Female
1%	No Response

TABLE 35.

2011-2012 STUDENT FOLLOW-UP SURVEY SUMMARY (NON-RETURNING)
*Students who attended SLCC Fall Semester 2011,
 but did not return Spring Semester 2012*

ALL NON-RETURNING STUDENTS -
 (764 Responses)

What was your primary objective in attending SLCC?

38%	Earn degree/transfer to a 4 year institution
13%	Take courses/transfer before earning a degree at SLCC
20%	Earn a degree/certificate at SLCC and work in that field
3%	Take some courses to upgrade skills in present job
5%	Take some courses and apply for a new job
21%	Other

Why did I not re-enroll at SLCC in the Spring semester?

18%	Financial reasons
12%	Personal problems
13%	Completed the courses I wanted
12%	Transferred
4%	Military/Church Mission
6%	Graduated
4%	Dissatisfied with SLCC
27%	Other
4%	No response

How many semesters did you complete at SLCC?

22%	1
13%	2
12%	3
9%	4
9%	5
8%	6
4%	7
16%	8 and above
7%	No response

What was your total general grade point average?

5%	Less than 2.0
23%	2.1 – 3.0
20%	3.1 – 3.5
33%	Greater than 3.5
19%	Do not know/No Response

Do you intend to return and re-enroll at SLCC?

43%	Yes, within a year
16%	Yes, but don't know exactly when
18%	Uncertain about whether or not
19%	Do not plan to return
4%	No response

What was your credit hour enrollment last semester?

42%	1 – 5 credit hours
34%	6 – 11 credit hours
17%	12 – 14 credit hours
3%	15+ credit hours
4%	No response

How many hours do you work in a week?

15%	None
11%	1 – 19
23%	20 – 35
39%	36 – 45
9%	46 and over
3%	No response

What is your age group?

32%	18 – 23
30%	24 – 30
11%	31 – 35
23%	36 and over
4%	No response

Are you?

39%	Male
56%	Female
5%	No response

TABLE 35.**2011-2012 STUDENT FOLLOW-UP SURVEY SUMMARY (NON-RETURNING)
(Continued)****While you were attending SLCC, were you affected by any of the following situations?**

	Not a Problem	Minor Problem	Problem	Major Problem	No Response
I experienced financial difficulties.	18%	13%	52%	15%	2%
Family responsibilities made it difficult to attend	59%	20%	12%	8%	1%
Attendance conflicted with my work schedule	56%	24%	12%	6%	2%
Classes were not available when I needed them.	42%	23%	20%	9%	6%
Courses were not challenging enough.	78%	11%	3%	1%	7%
I found the course work too difficult.	68%	18%	6%	2%	6%
I couldn't decide on a major/field of study.	69%	14%	6%	5%	6%
I experienced health or other personal problems.	67%	10%	8%	9%	6%
I felt out of place at SLCC.	77%	10%	4%	3%	6%
I could not find time for classes and assignments.	59%	22%	10%	2%	7%
I lacked motivation to study and complete assignments.	62%	21%	8%	3%	6%
Taking only a few courses at a time is slow and discouraging.	61%	19%	10%	4%	6%

Evaluate the areas that apply to you (Percentages are those using the services.)

	Very Satisfied	Satisfied	Neutral	Dis-satisfied	Very Dis-satisfied
Overall SLCC experience	31%	47%	17%	3%	2%
Academic Advising	20%	29%	32%	12%	7%
Quality of Instruction	28%	46%	18%	5%	3%
Career Information	18%	27%	42%	10%	3%
Timely Feedback from Instructors	27%	45%	18%	7%	3%
Instructor Availability Outside of Class	27%	36%	29%	6%	2%
Availability of Classes at Preferred Campus	20%	27%	24%	21%	8%
Distance Education Offerings	16%	24%	53%	5%	2%

TABLE 36.

2011-2012 GRADUATING STUDENT SURVEY

(673 Responses)

(More than one response accepted.)

What was your primary objective in attending SLCC?

52%	University/College transfer credit
21%	Preparation for a job to be obtained
13%	Try to get a college degree as quickly as possible
25%	Other

What are your plans after graduation?

50%	Begin in Fall 2012 at a 4 year college/university
22%	Transfer to a 4 year college/university at some point in time in the future
23%	Try to obtain a job in the field I studied at SLCC
6%	Obtain a job in any field now that I have a college degree
16%	Other

Which statement best describes your feelings about your educational experience at SLCC?

41%	Very Satisfied
49%	Satisfied
7%	Neutral
2%	Disappointed
1%	Very Disappointed

What is your age group?

37%	24 years and under
40%	25 - 34
12%	35 - 44
9%	45 and over
2%	Unknown

Are you?

33%	Male
65%	Female
2%	No Response

At the present time, are you married?

50%	Yes
48%	No
2%	No Response

Rate the college services below according to how well they fulfilled your individual needs. (Percentages are those using the services.)

	<u>Very Poor</u>	<u>Poor</u>	<u>Avg</u>	<u>Good</u>	<u>Very Good</u>
Academic/Career Advising	3%	14%	23%	37%	23%
Student Express Center	1%	2%	33%	45%	19%
Child Care	2%	6%	40%	22%	30%
Bookstore (not including textbook prices)		2%	27%	50%	21%
Computer Labs		2%	22%	48%	28%
Disability Resource Cntr	2%	7%	30%	34%	27%
Financial Aid	2%	8%	19%	39%	32%
Library Services	1%	2%	18%	51%	28%
Library Web Resources	3%	4%	21%	47%	25%
Student Employment	3%	14%	22%	27%	34%
Tutor/Learning Center	2%	6%	22%	37%	33%
Veteran's Services	4%	5%	32%	25%	34%
Registration	1%	3%	19%	49%	28%

Rate the instructional services according to how well they fulfilled your individual needs.

	<u>Very Poor</u>	<u>Poor</u>	<u>Avg</u>	<u>Good</u>	<u>Very Good</u>	<u>N/A</u>
Physical Classroom		4%	26%	48%	21%	1%
Typical Class Size		1%	17%	46%	35%	1%
Location of Classes		3%	19%	54%	24%	
Availability of Classes to Choose From	1%	11%	28%	37%	21%	2%
Instructor's Concern for Student Needs	1%	4%	26%	44%	23%	2%
Grading/Testing		1%	25%	54%	19%	1%
Price of Textbooks	14%	26%	43%	13%	3%	1%
Overall Quality of Instruction	1%	3%	16%	58%	21%	1%
Instructor's Knowledge of Subject		1%	11%	50%	37%	1%

TAB H. STEP AHEAD

NON-CREDIT ACTIVITY

The Division of Applied Technology provides quality non-credit vocational/technical training for qualifying students. The Division provided over 444,552 hours of scheduled instruction in 2011-2012.

The School of Professional and Economic Development also provides quality instruction for businesses through workshops and specialized training programs.

Fast Facts

- (Division of Applied Technology) 2011-2012 Hours of Training = 444,552
- (Division of Applied Technology) 2011-2012 Student FTE's = 493.95
- (Division of Applied Technology) Non-white Population = 37.8%
- (School of Professional and Economic Development) 2011-2012 Non-Credit Student Enrollment = 11,824

Salt Lake Community College Division of Applied Technology

Mission

The Division of Applied Technology, within the Salt Lake Community College, provides quality career and technical education in a flexible, competency-based format to meet the needs of students desiring low-cost training in high demand, high wage, and high skill job fields. Programs are responsive to business and industry requirements resulting in appropriate license, certification, or evidence of completion, articulating, where appropriate, with credit career and technical education courses within the College.

Operating Characteristics

Open-entry / Open-exit	Students enter when they are ready and exit when they are finished
Competency-based	Students' progress as they demonstrate skills and knowledge
Cost	Tuition based on \$1.91 per clock hour (2012-2013)
Secondary Students	High school students enroll tuition free and may earn high school credit
Flexible Start Date	Programs available year-round – not tied to traditional semesters or school year
Flexible Scheduling	Flexible, individualized scheduling or students may enter a cohort
Program Options	Students select from more than 30 certificate options
Locations	Five sites in the Salt Lake Valley, some programs offered at more than one location
Partnerships with Industry	Every program has a Program Advisory Committee to assist and support
Qualified Faculty	Faculty are hired for their technical skills and their ability to work with students
Sponsored	Sponsorships – most programs are VA eligible and many are PELL eligible
Basic Skills Available	Adult Based Education, ESL, GED test prep, Learning Lab

TABLE 37.

**DIVISION OF APPLIED TECHNOLOGY
HEADCOUNT, SCHEDULED HOURS, AND FTE ENROLLMENT
2011-2012**

(Includes Carry-Ins From Fiscal Year to Fiscal Year)

Department	Program/Course	HEADCOUNT	SCHEDULED HRS	FTE'S
Adult Basic Education				
	Adult Basic Education	135	18,994.00	21.10
	Adult Basic Skills - Reading	3	496.00	0.55
	Adult Basic Skills - Both	11	1,244.00	1.38
	ASVAB Test Preparation	2	328.00	0.36
	GED Test Preparation	27	5,327.00	5.92
Air Conditioning, Heating and Refrigeration				
	Air Conditioning, Heating and Refrigeration	124	35,345.00	39.27
Automotive and Related Technologies				
	Auto General Service Tech	2	457.00	0.51
	Automotive Technician	3	867.00	0.96
	Automotive Undercar Technician	3	150.00	0.17
Computer Technology				
	Computer Applications	2	30.00	0.03
	Computer Learning Center	81	9,591.00	10.66
	Computer Support Specialist (A+)	138	29,064.00	32.29
	Graphic Designer	9	2,012.00	2.24
	Internet Technician Networking	1	90.00	0.10
	Linux Network Administrator	1	3.00	0.00
	Media Design Technology	30	5,399.00	6.00
	Network Administrator	14	2,622.00	2.91
	Network Engineer (MCSE)	4	728.00	0.81
	Network Engineer	56	10,604.00	11.78
	Network Infrastructure Technician	31	5,468.00	6.08
	Networking Technician (Net+)	1	16.00	0.02
	Web Site Designer	11	2,263.00	2.51
	Web Programmer	20	6,307.00	7.01
Diesel Systems Technology				
	Heavy Duty Diesel Maintenance	15	2,485.00	2.76
	Heavy Duty Diesel Tech	8	676.00	0.75
Electronics				
	Electromechanical Assembly Technician	18	3,332.00	3.70
	Electronics Assembly Technician	12	991.00	1.10
	Electronics Comm Technician	18	5,311.00	5.90
	Electronics Engineering Technician	11	2,711.00	3.01
	Electronics Technician	59	14,998.00	16.66
English as a Second Language (ESL)				
	English as a Second Language (ESL)	446	111,800.00	124.22
Health Care Industry				
	Certified Nursing Assistant	186	13,724.00	15.25
	Clinical Lab Assistant	9	1,451.00	1.61
	Clinical Medical Assisting	103	23,506.00	26.12
	Health Information Specialist	25	5,953.00	6.61
	Health Unit Clerk/Coordinator	12	1,144.00	1.27
	Medical Coding and Billing	200	41,672.00	46.30
	Medical Office Laboratory Technician	5	317.00	0.35
	Medical Office Administrator	21	3,658.00	4.06
	Nutrition Assistant	3	143.00	0.16
	Phlebotomy Technician	7	470.00	0.52
	Pharmacy Technician	1	45.00	0.05
Machinist				
	Machinist/Manual Machinist	34	7,739.00	8.60
Office Information Systems				
	Accounting Clerk	71	11,587.00	12.87
	Administrative Office Specialist	80	11,782.00	13.09
	Administrative Clerk	2	222.00	0.25
	Business Administrative Support I	3	385.00	0.43
	Business Administrative Support II	1	30.00	0.03
	Customer Service/Receptionist	24	3,360.00	3.73
	Office Clerk	3	514.00	0.57
Professional Truck Driving				
	CDL Learners Permit	17	2,045.00	2.27
	Professional Truck Driving	65	12,925.00	14.36
Welding				
	Welding	73	21,930.00	24.37
Other				
	Fork Lift Training	7	49.00	0.05
	Undecided	1	174.00	0.19
	Youth Building Construction	1	18.00	0.02
TOTALS			444,552.00	493.95

TABLE 38.

**DIVISION OF APPLIED TECHNOLOGY
STUDENT INFORMATION JULY 1, 2011 THROUGH JUNE 30, 2012
(Unduplicated Headcount)**

	FEMALE	MALE	GENDER NOT REPORTED	TOTAL NUMBER	% OF TOTAL
ETHNICITY					
Caucasian	469	597	2	1068	47.8%
Hispanic	303	226	1	530	23.7%
Asian	90	62		152	6.8%
Black	41	57		98	4.4%
Native American	21	14		35	1.6%
Pacific Islander	13	17		30	1.3%
Two or more races	10	8		18	0.8%
Non Resident Alien	71	57	1	129	5.8%
Unknown	82	95	1	178	7.9%
Totals	1100	1133	5	2238	100.0%

TRAINING STATUS					
Completed Training Objectives	419	369	1	789	35.3%
Left Prior to Completing Training Objectives	307	411	3	721	32.2%
Continuing Training/Education	374	353	1	728	32.5%
Totals	1100	1133	5	2238	100.0%

STUDENTS RECEIVING ASSISTANCE					
2,238 Surveyed					
Supplemental Security Income	10	7		17	0.8%
Food Stamps	53	39	1	93	4.2%
Totals	63	46	1	110	5.0%

OTHER ASSISTANCE					
2,238 Surveyed					
(Students can be in more than one category)					
Displaced Homemakers	23	1		24	1.1%
Limited English Proficiency	297	198	1	496	22.2%
Economically Disadvantaged	256	253	1	510	22.8%
Single Heads of Household	65	7		72	3.2%

TABLE 39.

**DIVISION OF APPLIED TECHNOLOGY
DISTRIBUTION OF GRADUATES
BY PROGRAM AND BY GENDER**

PROGRAM AREA	MALE 2011-2012	FEMALE 2011-2012	TOTAL 2011-2012
AC/Refrigeration/Heating	25	1	26
Accounting Clerk	4	12	16
Administrative Clerk	1		1
Administrative Office Specialist	1	4	5
Automotive Gen Service Tech	1		1
Automotive Technician	2		2
Automotive Undercar Tech	2		2
Business Admin Support II		1	1
CDL Learners Permit	1		1
Certified Nurse Assistant	32	128	160
Clinical Lab Assistant	2		2
Clinical Medical Assisting	3	25	28
Computer Applications	1	1	2
Computer Support Spec. A+	15	6	21
Customer Service/Receptionist	1	4	5
Electromechanic Assembly Tech	4	2	6
Electronics Assembly Tech	4	2	6
Electronics Technician	8		8
Graphic Designer	1		1
Health Information Specialist	1	7	8
Health Unit Clerk/Coordinator		8	8
Heavy Duty Diesel Maintenance	3		3
Heavy Duty Diesel Technician	2		2
Manual Machinist	15	1	16
Media Design Technology	2	1	3
Medical Coding and Billing	1	34	35
Medical Office Administration		3	3
Medical Office Lab Tech		1	1
Network Administrator	3		3
Network Engineer	2		2
Network Engineer (MCSE)	4		4
Network Infrastructure Tech	1		1
Phlebotomy Technician		1	1
Professional Truck Driving	47	5	52
Web Programmer	5		5
Web Site Designer	1		1
Welding	23	1	24
Youth Building Construction	1		1
TOTALS	219	248	467

NOTE: Includes both Certificates of Completion and Certificates of Proficiency

SOURCE: Cognos Report/IPEDS Official Numbers

TABLE/GRAPH 40.

**DIVISION OF APPLIED TECHNOLOGY
2011-2012 TOTAL REVENUE SOURCES AND EXPENDITURES**

REVENUE SOURCES	
State Appropriations	\$ 5,793,300
Tuition	1,049,323
Non-tuition Revenue	72,192
TOTAL	\$ 6,914,815

EXPENDITURES	
Instruction	\$ 4,397,160
Student Services	1,044,821
Academic Support	165,317
Institutional Support	539,295
Plant Operations	482,268
TOTAL	\$ 6,628,861

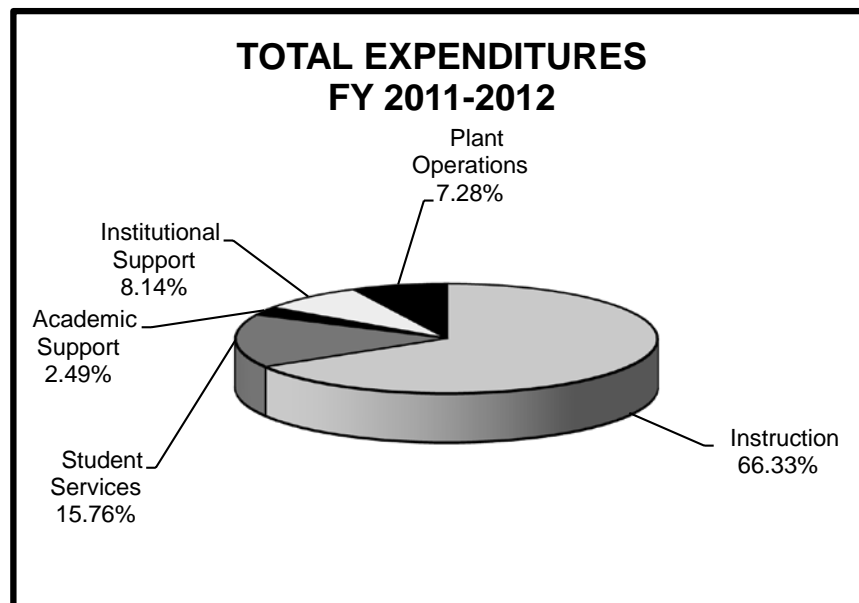
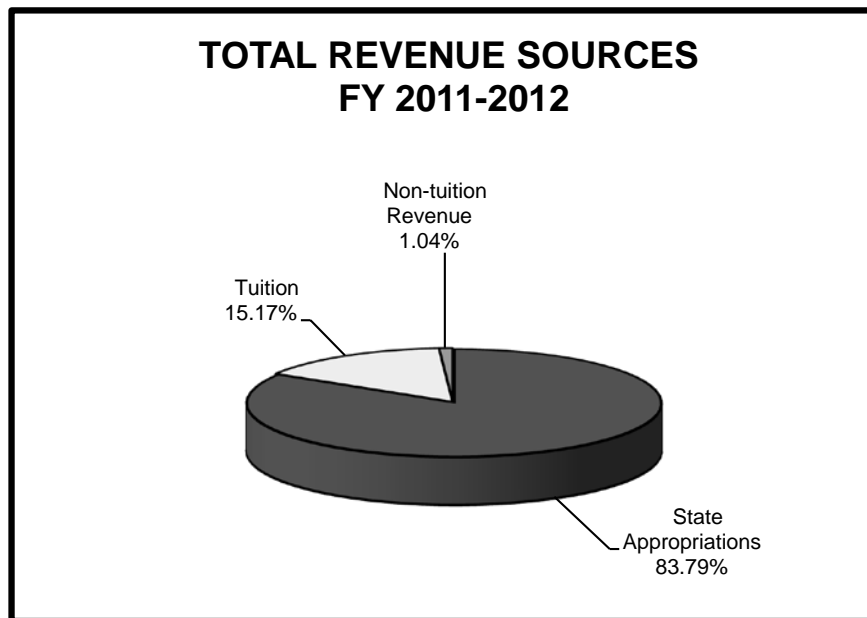


TABLE 41.

SCHOOL OF PROFESSIONAL AND ECONOMIC DEVELOPMENT
NON-CREDIT STUDENT ENROLLMENT

PROGRAM OR COURSE	2007-08	2008-09	2009-10	2010-11	2011-12
NON-CREDIT BY PROGRAM SUBJECT CODE					
CEAB - Accelerated Business Program Fee				140	149
CEAL - ARL	126	157	143	109	75
CEAS - ASL	206	159	271	60	
CEAT - ATE - CTE	167	37	27	30	33
CEBC - Small Business Center Training	189	223	527	528	646
CECD - CAD	60	49	35	94	93
CECO - Composites					2
CECT - Contractor's License Renewal	29	418	661	46	578
CECW - Computer Workshops	917	597	561	662	562
CEDM - Digital Media			3	29	21
CEEI - Encore Institute			7	164	94
CEEM - Energy Management					22
CEEU - CEU's			59	87	70
CEGA - Green Academy			5		
CEGN - Genealogy			2	11	5
CEHI - Health Information Technology				97	86
CEHS - Human Services			6	17	40
CEHW - Health Wellness			24	6	53
CEHZ - Alternative Energy Sources	110	120	216	179	140
CEIB - International Business	10	3	1	3	1
CEIP - Motorcycle Safety	990	1,130	831	562	655
CEIP - Public Safety	150	203	246	259	239
CELN - Lineman			16		
CELS - Library Information Science				2	
CEMG - Ed-2-Go			30	29	7
CEMS - Notary Training	229	254	207	94	104
CEPD - Professional Development		122	180	332	
CEPW - Professional Workshops (Summit)		57	47	29	
CERA - Real Estate	40	4			
CESB - Small Bus Dev Ctr (State)			20	12	8
CESG - Smart Grid/Electric Sector					176
CESO - Sonography					89
CESP - State Energy Sector Partnership Grant				320	1,226
CESS - Safety & Emissions			9	447	530
CESU - Sustainability		29	1	4	5
CETG - Ed to Go/Computer Training	192	331	292	470	512
CETR - Transportation Training UDOT/UTA/UPR	1,772	3,419	1,265	1,096	1,221
CETS - Health Info Tech Support				53	13
CEWB - Women's Business Institute		67	173	145	
CEST - STIT	672	739	853	481	685
CUSTOM FIT TRAINING	1,129	1,514	1,277	1,774	2,045
NON-CREDIT NON PROGRAM SUBJECT CODE					
Program Events			1,137	1,205	222
TSA Training		27			
Small Business Assistance	912	388	599	824	948
Salt Lake Airport Training		159			
Ford Training Center (Outreach)	563	600	427	557	469
NON-CREDIT ACADEMIC OFFERINGS	27	14			
COMBINED TOTALS	8,490	10,820	10,158	10,957	11,824

NOTE: Some duplication may occur within Program Subject Code.

SLCC LOCATIONS



STEP AHEAD.

Community Writing Center (CWC)
 in Library Square
 210 East 400 South
 Salt Lake City, Utah 84111
 (801) 957-2192

Highland Center (HLDC)
 3760 South Highland Drive
 Salt Lake City, Utah 84110
 (801) 957-2100

**International Aerospace/Aviation
 Education Center (AP)**
 551 North 2200 West
 Salt Lake City, Utah 84116
 (801) 957-2050

Jordan Campus (JC)
 3491 West Wights Fort Road
 West Jordan, Utah 84088-8818
 (801) 957-2600

Library Square Center (LSC)
 231 East 400 South
 Salt Lake City, Utah 84111
 (801) 957-2000

Meadowbrook Campus (MBC)
 250 West 3900 South
 Salt Lake City, Utah 84107
 (801) 957-5821

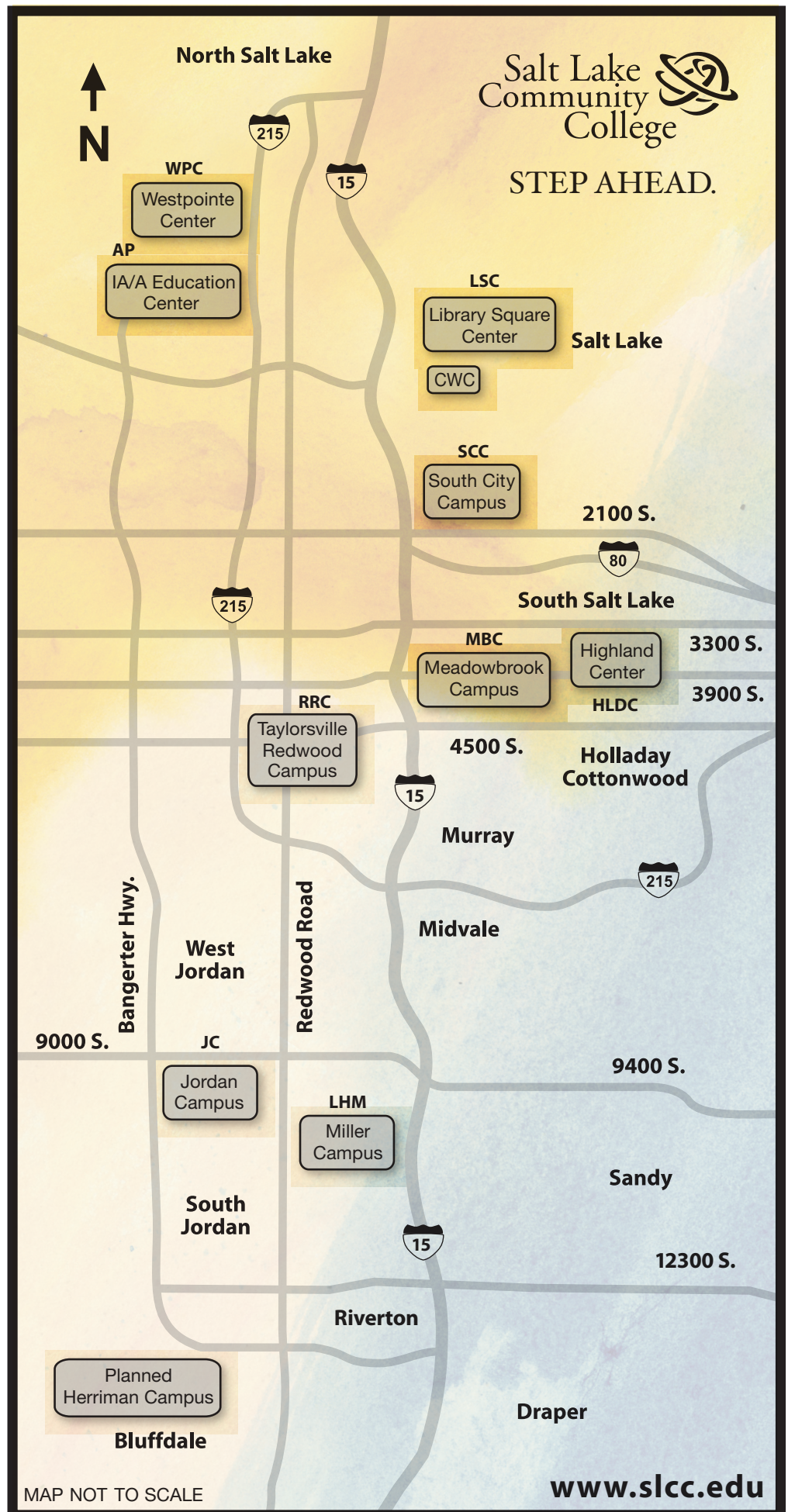
Miller Campus (LHM)
 9750 South 300 West
 Sandy, Utah 84070
 (801) 957-5200

SLCC Online
www.slcc.edu/online
 (801) 957-4406

South City Campus (SCC)
 1575 South State Street
 Salt Lake City, Utah 84115
 (801) 957-4111

Taylorsville Redwood Campus (RRC)
 4600 South Redwood Road
 Salt Lake City, Utah 84123
 P.O. Box 30808
 Salt Lake City, Utah 84130-0808
 (801) 957-4111

Westpointe Center (WPC)
 2150 West Dauntless Avenue
 Salt Lake City, Utah 84116
 (801) 957-2150



MAP NOT TO SCALE

www.slcc.edu